

This document is meant to get the end-user (you) familiar with some basic and not-so-basic settings and controls within the Valet App. Instructions for syncing your app and installing the GW-SL1 gateway are covered elsewhere. If you have not properly installed the gateway or synced the app, the Valet app will not function properly.

As always, if you have any questions, or need support with the Valet app, please contact us: via email at : **valet@htd.com** or call us Toll-Free at: **866-HTD-AUDIO (483-2834)**. We'll be glad to help.

### System Status Page

The System Status page is the page that you will likely spend most of your time controlling your system. It is also the first page that you will interact with when starting your Valet app (after the app has been configured correctly).

Keep in mind that the below System Status page shows six zones. That is because it is controlling a six-zone system. If you are using a 12 zone system, 12 zones will be displayed here. This also means that you may need to scroll to access all zones and access the All On and All Off buttons.

The screenshot shows the 'System Status' page with the following elements and callouts:

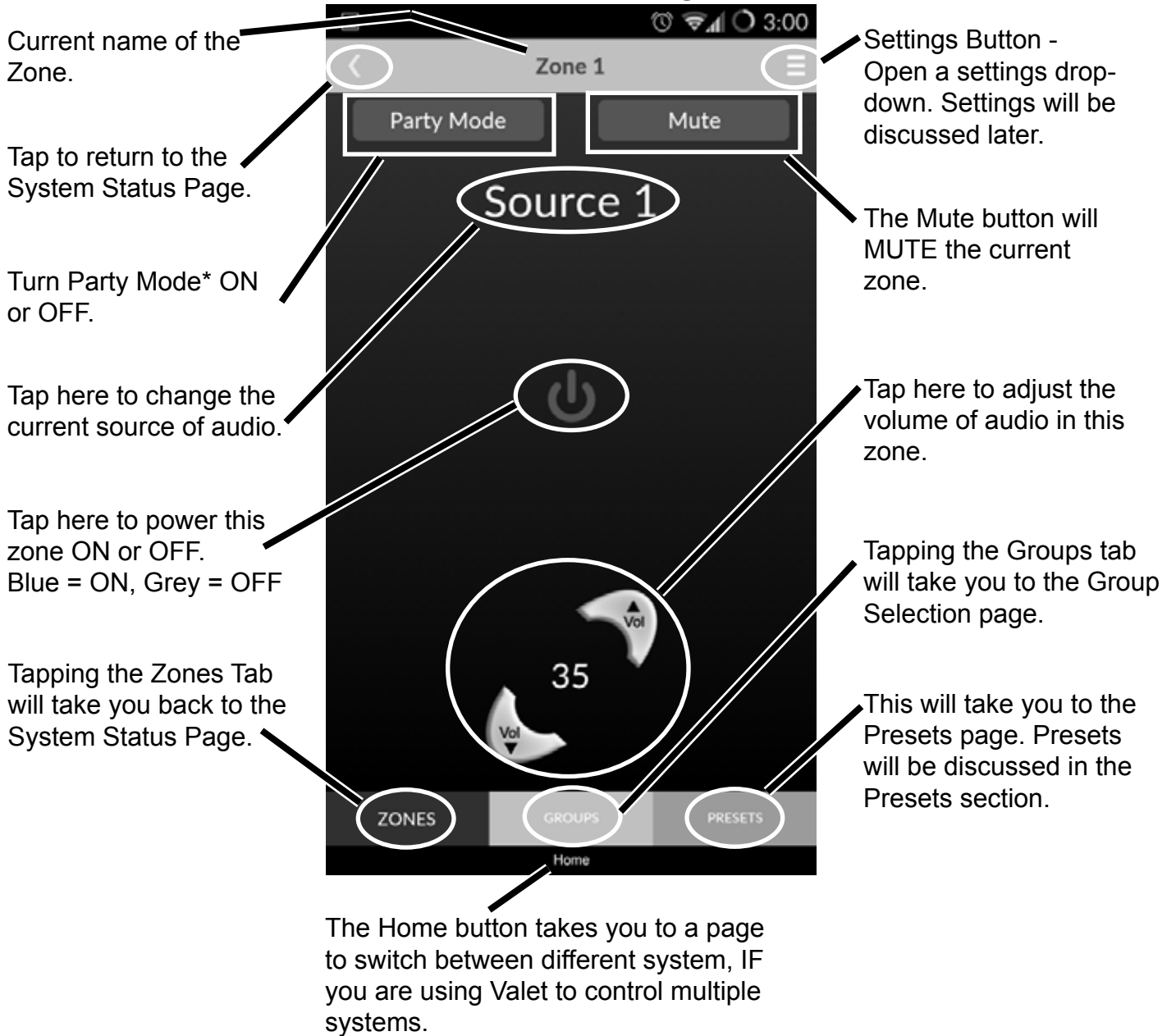
- Settings Button:** A hamburger menu icon in the top right corner. Callout: "Settings Button - Open a settings drop-down. Settings will be discussed later."
- Zone Controls:** A list of six zones, each with a power button icon. Callout: "Power ON/OFF individual zones using the [power icon]. Blue = ON, Grey = OFF."
- Zone Name:** The text 'Zone 1' through 'Zone 6'. Callout: "Tapping the Zone Name will take you to the **Zone Page** for that specific zone. **See Zone Page.**"
- Source Name:** The text 'Source 1' repeated for each zone. Callout: "Tapping the source name will allow you to change the source for a specific zone."
- Volume:** A numerical value (35, 46, 43, 30, 30, 30) next to each source name. Callout: "Tapping the volume # will allow you to change the volume for a specific zone."
- All On/Off Buttons:** Two buttons at the bottom of the zone list. Callout: "The ALL ON and ALL OFF buttons will turn ALL zones ON or OFF."
- Navigation Tabs:** 'ZONES', 'GROUPS', and 'PRESETS' at the bottom. Callout: "Tapping the Groups tab will take you to the Group Selection page."
- Home Button:** A 'Home' button below the navigation tabs. Callout: "This will take you to the Presets page. Presets will be discussed in the Presets section."
- System Navigation:** Callout: "The Home button takes you to a page to switch between different system, IF you are using Valet to control multiple HTD systems."

# Zone Page

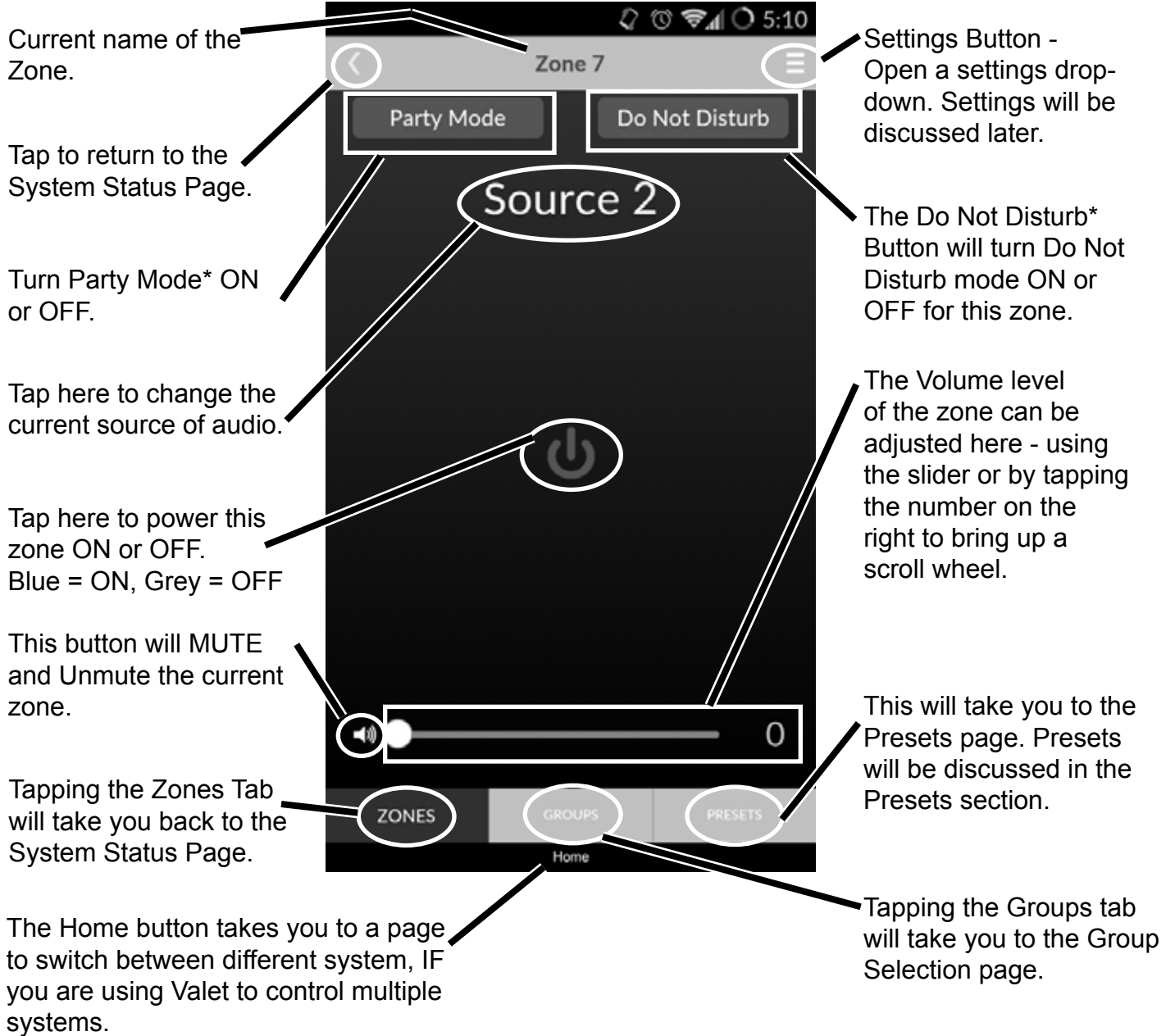
The Zone Page is the page where you can control an individual zone. The Zone page can be accessed easily from the System Status Page. The Zone page differs from the System Status page in that there are a few more advanced controls available on the Zone page.

It is important to state here that, due to the difference in functionality between the Lync system and the Mid-Level system, the Zone page appears differently depending on which system you are controlling. We will try to illustrate such differences below.

## Mid-Level Zone Page



## Lync Zone Page



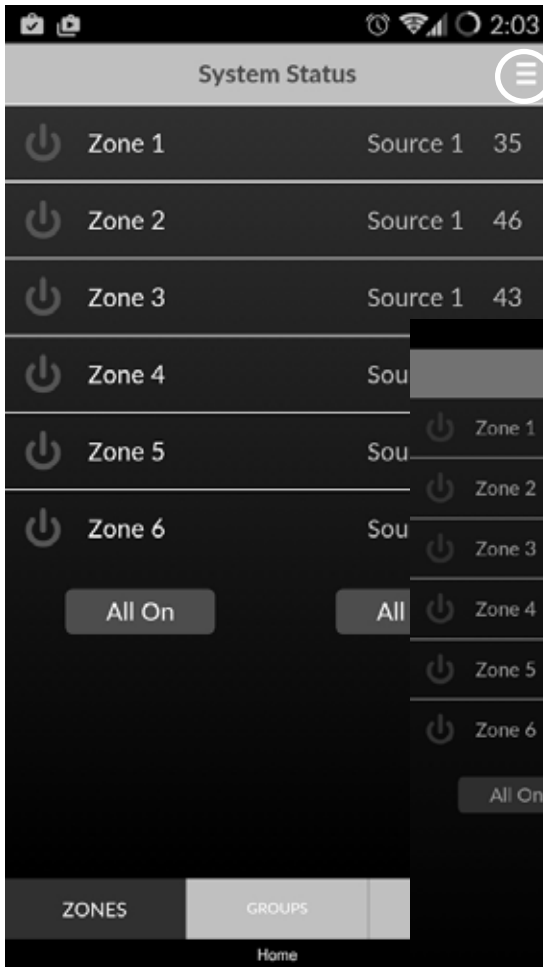
### Terms Defined

**\*Do Not Disturb (DND):** Press the DND button to put a zone into Do Not Disturb mode. The letters "DND" will appear in the upper right corner of the LCD display of the zone's Lyncpad if you are using one. As the name implies, in this mode a zone is not affected by: intercom, party mode, all off, and system mute. Press the DND button again to remove a zone from DND mode. This feature is only available with the Lync6 and Lync12 system.


**\*Party Mode:** It is possible to turn all of the zones to the same source from the Valet app. This is called "Party Mode". Selecting Party Mode within the Zone Page will change all zones to the currently selected source on this page. All zones not in DND mode will be powered On (if not already on) and switched to this source. The volume level in each zone will remain at its previous setting. The volume on the originating zone does not affect other zones. Simply select a different source on any keypad or within the Valet app to take that a zone out of Party Mode.

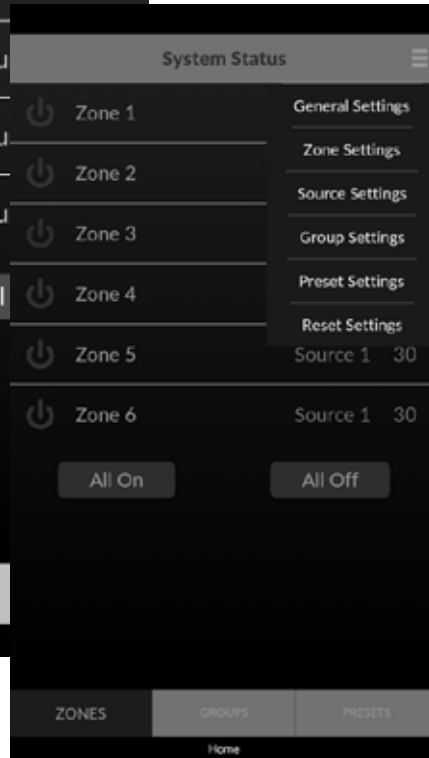
## Accessing Valet Settings

So far, we have mainly covered Zones within the Valet App - and more specifically generic, uncustomized zones. One of the first things you might want to do is name some zones, or maybe adjust Treble or Bass for a specific zone. We will cover that in the following sections, but first let's talk about Valet Settings and accessing these settings.




Valet settings are relatively easy to get to, and they can be accessed from any main page (System Status, Presets, Groups) within the app.

On the left you will see the System status page. In the upper-right corner of the System Status page you will see a symbol that looks like this: . Tapping this symbol will provide you with a drop-down of all the different Valet Settings. (See the image below-left)



This image is essentially the same page with the settings button pressed. You can see all available settings options for the Valet App.

But just because we are showing you this via the System Status page does NOT mean that this is the only page that can access the Settings.

As described above, Settings can be accessed from any main page within the Valet app. Just look for this symbol: .

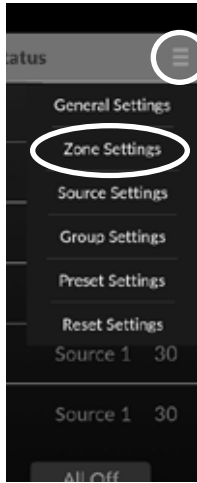
The Settings of the Valet App is where the real magic happens. This is where you will name zones, make a set of zones act as one (Groups), create a shortcut to turn specific

zones on at a specific volume level, turn other zones off, and set other zones to a specific source all by pressing one single button (Presets). Now that is really cool!

So from this point on, we are going to be looking at ways to customize the Valet app to the way you live. We are NOT going to go directly through the list of Valet settings one by one, but instead we are going to be introducing them logically based upon when you would probably want to use them. Just keep in mind that when we reference the "Valet settings menu" or "settings tab" this is the area that we are referencing. **One last important note about settings: All settings (with the exception of Tone Control) within the app are unique to the specific handset that you are using. Said another way, any settings you make on your handset (with the above exception) will not effect any other user's app.**

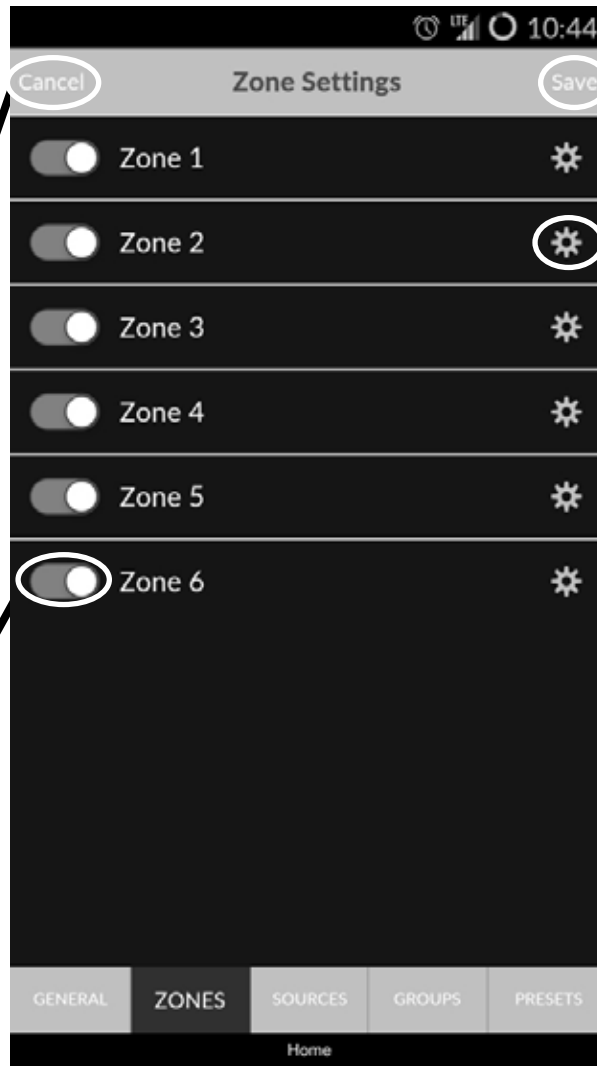
# Zone Settings

The Zone Settings will allow you to adjust Treble, change the name of a zone, and even remove a zone from being selectable within the app. We will go into more information about these features below.



To access Zone Settings, tap the Settings icon (☰), and then select Zone Settings from the drop-down menu. For more information about accessing the Valet App Settings see the “Accessing Valet Settings” section.

## Main Zone Settings Page



Use this button to Save any changes made on this page.

Tap this symbol to access this Zone's Settings Submenu. See Zone Settings Submenu

Pressing Cancel will cancel all unsaved adjustments made on this page, and send you to the System Status Page. There will be a warning to alert you about losing unsaved settings.

These toggles will allow you to determine which zones appear for you to control within the App. All zones are set to be visible by default. Note that this setting only affects this specific handset.

Access the other Valet App Settings using these tabs. It is important to remember that accessing these other settings will cancel unsaved changes made on this page.

## Zone Settings Submenu

The Zone Settings Submenu will be the place to customize specific zones - give them a name, adjust Tone Control, etc.

Access the Zone Settings Submenu by tapping the (⚙️) within the Zone Settings for the specific zone that you want to control.

**Zone Settings Submenu**

Pressing Cancel will cancel all unsaved adjustments made on this page, and send you to the main Zone Settings page.

The zone that you are adjusting.

Use this button to Save any changes made on this page.

Use this Section to change the name of this Zone on this handset.

Tap this area to access this zone's Tone Control. Adjust Bass, Treble, and Balance for this specific zone. (These settings are universal - they will affect ALL handsets)

These toggles will allow you to determine which sources are available for this specific zone. All sources are set to be available by default. Note that this setting only affects this specific handset.

Access the other Valet App Settings using these tabs. It is important to remember that accessing these other settings will cancel unsaved changes made on this page.

# Source Settings

After you have named your zones you may want to think about naming your sources to something other than Source 1, Source 2, etc. You can do just that and more from the Source Settings area.

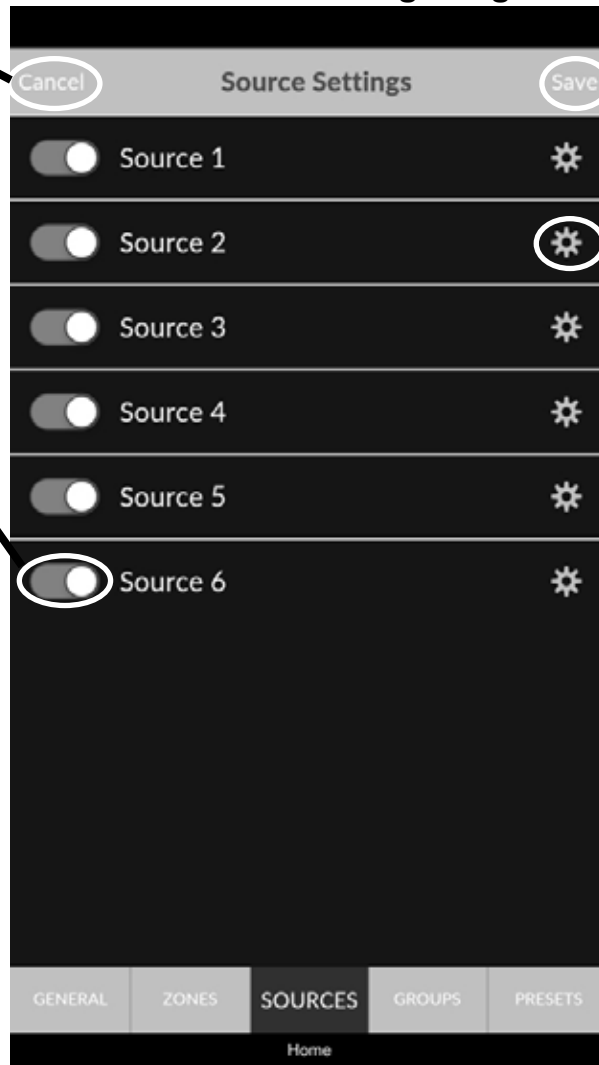
To access Source Settings, tap the Settings icon (☰), and then select Source Settings from the drop-down menu. For more information about accessing the ValetApp Settings see the “Accessing Valet Settings” section.

## Main Source Settings Page

Pressing Cancel will cancel all unsaved adjustments made on this page, and send you to the System Status Page. There will be a warning to alert you about losing unsaved settings.

These toggles will allow you to determine which sources appear for you to control within the App. All sources are set to be visible by default. Note that this setting only affects this specific handset.

Access the other Valet App Settings using these tabs. It is important to remember that accessing these other settings will cancel unsaved changes made on this page.



Use this button to Save any changes made on this page.

Tap this symbol to access this Sources's Settings Sub-menu. See Source Settings Submenu below

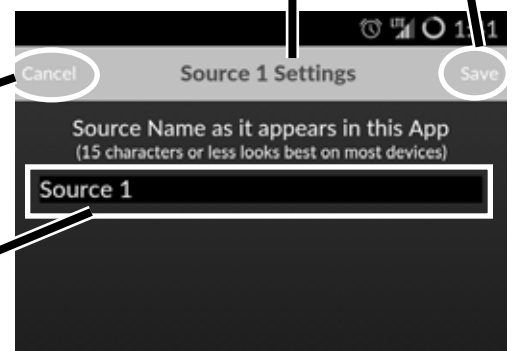
## Source Settings Submenu

Use this button to Save any changes made on this page.

The zone that you are adjusting.

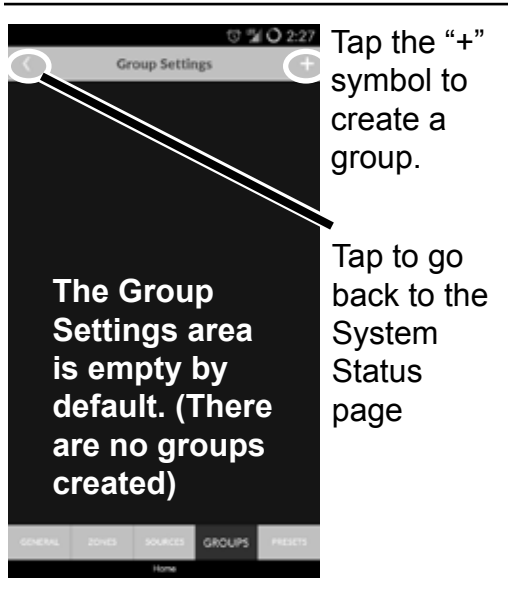
Pressing Cancel will cancel all unsaved adjustments made on this page, and send you to the main Source Settings page.

Use this Section to change the name of this Source on this handset.





# Group Settings



Tap the “+” symbol to create a group.

Tap to go back to the System Status page

Groups have been not been discussed previously, but they are a really interesting tool to control your HTD system. Groups are basically a set of zones that you may want to control, well, as a group. You create these groups from the available zones.

There are no groups created by default within the Valet App. In fact, if you were to go to the Group Selection page via the systems status page it shows just that. The Group Selection Page is for selecting groups that you have already created. The Group Settings page is for creating those groups. So what we are going to do is create some Groups.

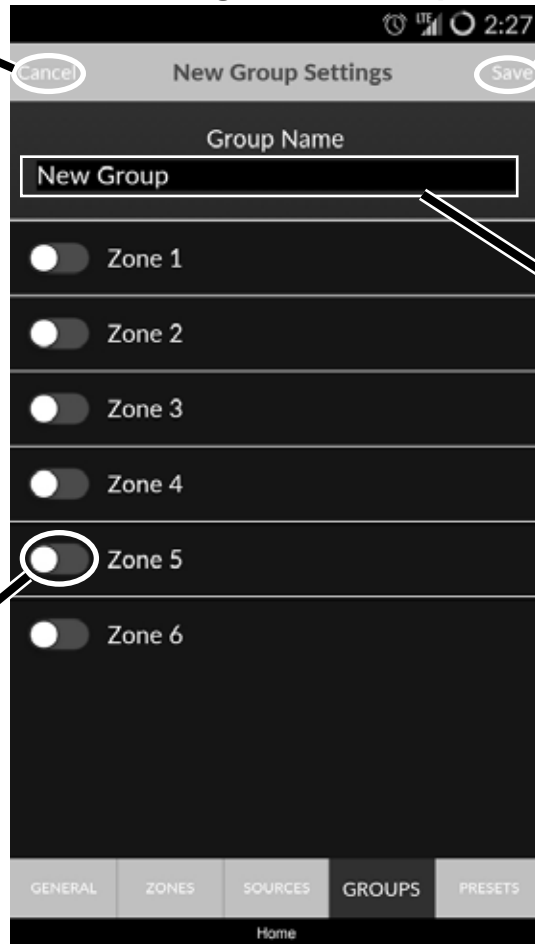
To access Group Settings, tap the Settings icon (☰), and then select Group Settings from the drop-down menu. For more information about accessing the Valet App Settings see the “Accessing Valet Settings” section.

It is worth mentioning here that, like the other settings within Valet, Groups are non-universal and only apply to the specific handset for which it was created.

## Creating a New Group

Pressing Cancel will cancel all unsaved adjustments made on this page, and send you to the System Status Page. There will be a warning to alert you about losing unsaved settings.

These toggles will allow you to determine which zones will be a part of your new Group. NO zones are selected by default. Blue Toggle = Included. Grey Toggle = Not included.



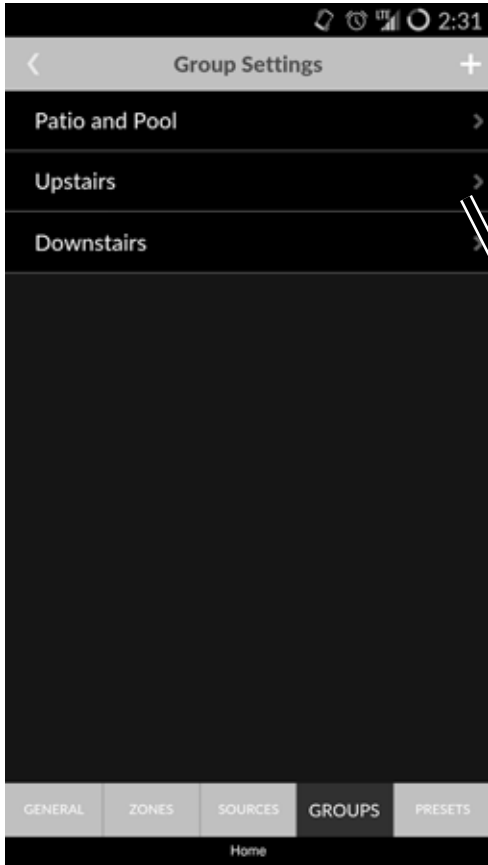
Use this Save button to Save any changes made on this page.

Use this area to name your new group.

Access the other Valet App Settings using these tabs. It is important to remember that accessing these other settings will cancel unsaved changes made on this page.



## Group Settings (cont.)

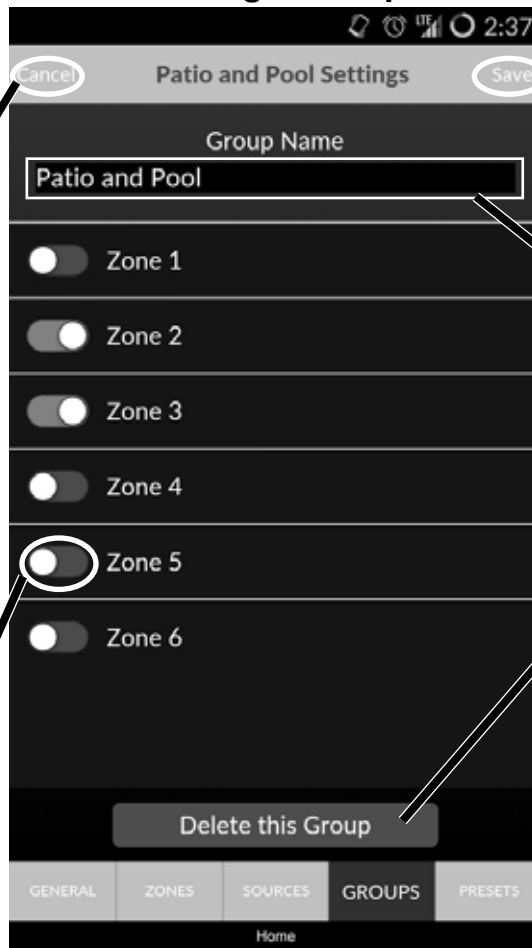


Back in the Group Settings page you can see that we have created 3 new Groups. These 3 new Groups can now be utilized in the Group Selection Page.

Also, keep in mind that any groups that you have created can be edit via the Group Settings page.

Click on the ">" to edit a specific group.

### Editing a Group



Pressing Cancel will cancel all unsaved adjustments made on this page, and send you to the System Status Page. There will be a warning to alert you about losing unsaved settings.

These toggles will allow you to determine which zones will be a part of your new Group. NO zones are selected by default. Blue Toggle = Included. Grey Toggle = Not included.

Use this Save button to Save any changes made on this page.

Use this area to edit the name your group.

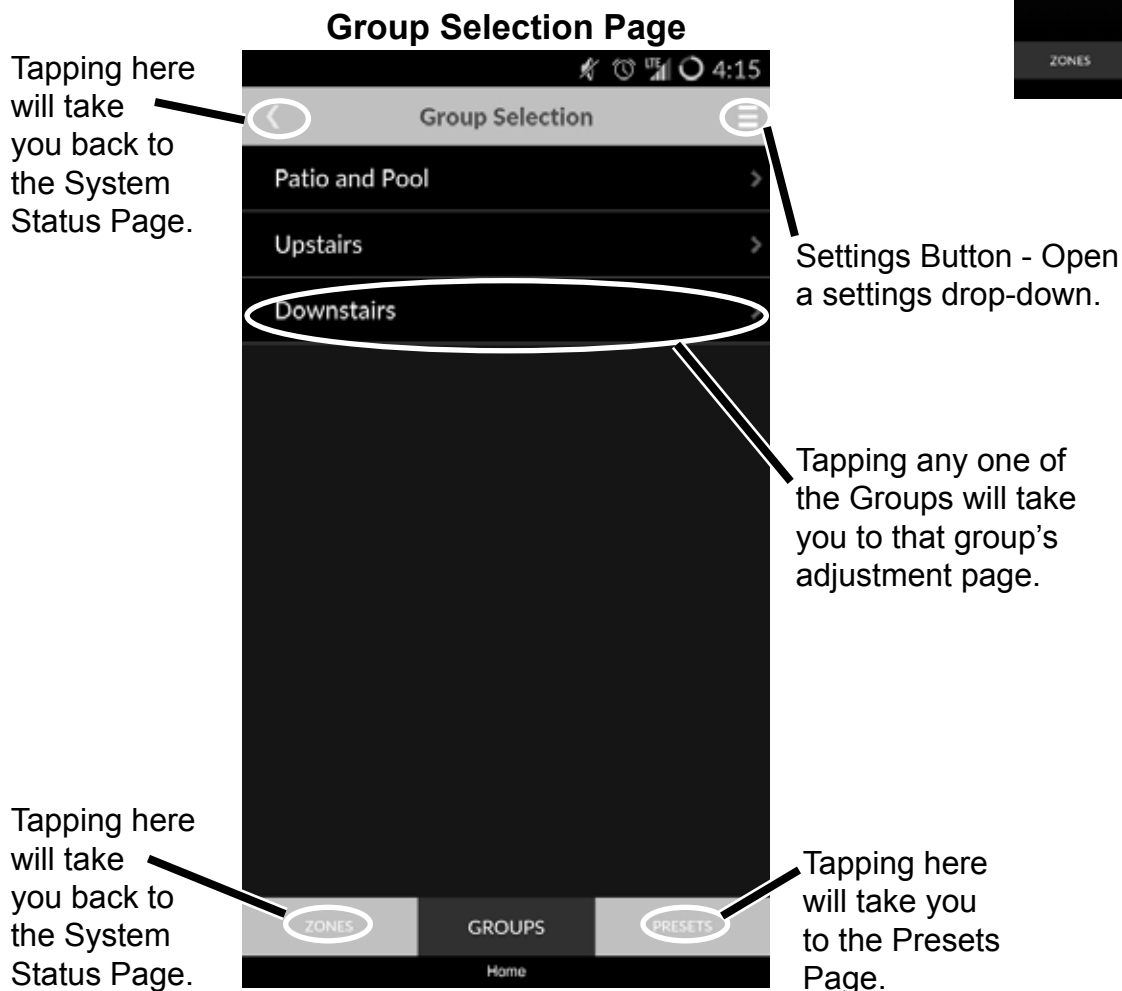
Click this button to delete this current group.

## Group Selection Page

Once you have created a Group, you likely want to use the group in your system. The easiest way to do this is by accessing the Group Selection page via the System Status page. (See image to the right.)

On the Group Selection Page, you will find the list of groups that you have created on your handset.

Below you will see the 3 Groups that we created previously in the Group Settings page.



## Group Adjustment Page

On the Group Adjustment Page, you will be able to control the groups that we created in the previous sections.

Pressing this symbol will take you back to the Group Selection Screen.

Settings Button - Open a settings drop-down.

The name of the Group that you are controlling.

Tapping the power buttons here will power the individual zone ON/OFF  
Blue = ON. Grey = OFF.

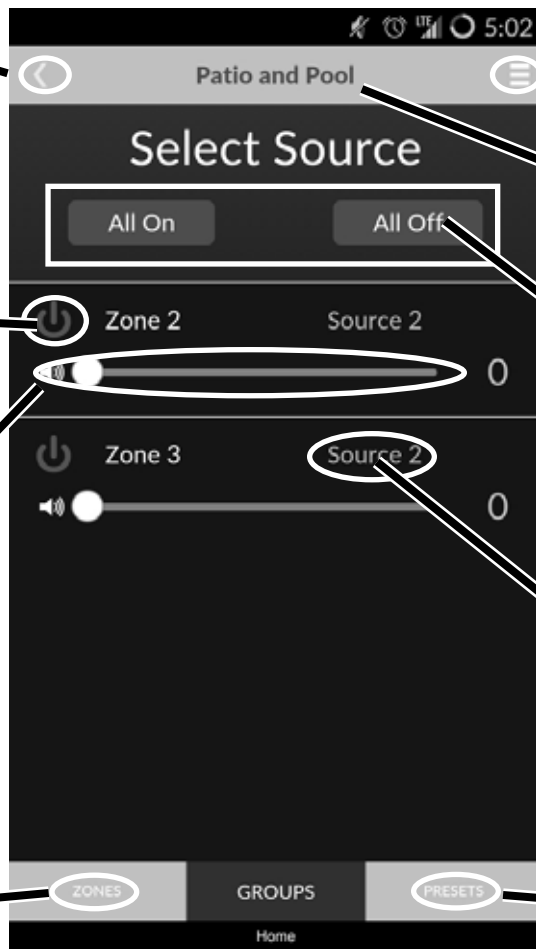
Tap these buttons to turn ALL of the zones that are a part of this group ON or OFF

Adjust volume for zone here.

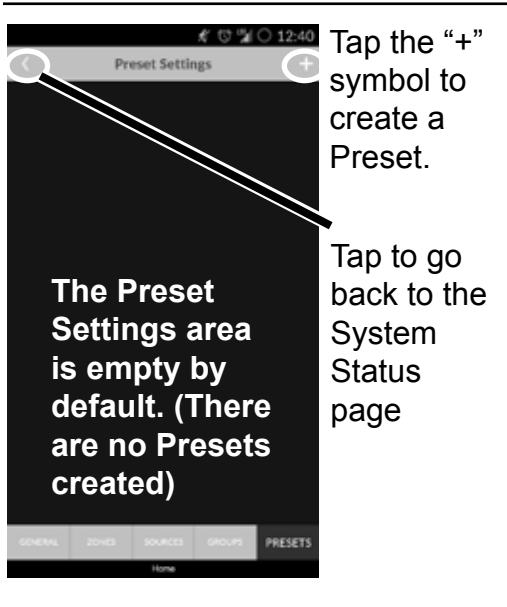
Tap here to select/change the source for each zone

Tapping here will take you back to the System Status Page.

Tapping here will take you to the Presets Page.



## Preset Settings Page




Tap the “+” symbol to create a Preset.

Tap to go back to the System Status page

One of the last features that Valet provides is one of the coolest. Where groups allow you to adjust a set of zones in a single location within the app. Presets allow you to make numerous complex adjustments to multiple zones at the push of a single button. Think of Presets as custom default settings that you create for one or more zones.

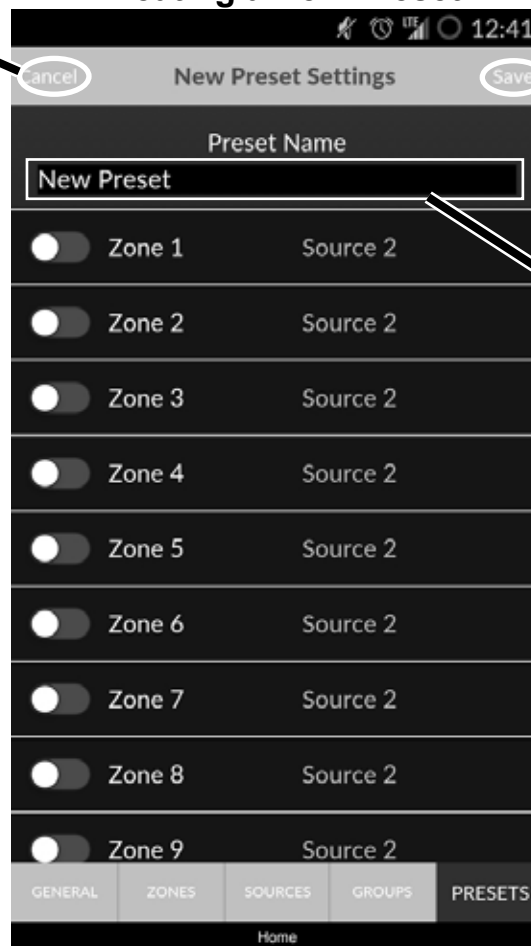
With a single tap of a preset, your patio can power on with your favorite internet radio station selected as the source at volume 30, your master bedroom power off, and your kitchen power on with your mp3 library as the source at volume 15. All of this can happen with a single tap of a button. That, my friend, is the power of Presets.

But much like Groups, Presets must be created before they can be used. So let’s take a look at the Preset Settings page to start building a Preset.

To access Preset Settings, tap the Settings icon (  ), and then select Preset Settings from the drop-down menu. For more information about accessing the Valet App Settings see the “Accessing Valet Settings” section.

### Creating a New Preset

Pressing Cancel will cancel all unsaved adjustments made on this page, and send you to the System Status Page. There will be a warning to alert you about losing unsaved settings.



Use this Save button to Save any changes made on this page.

Use this area to name your new Preset.

Access the other Valet App Settings using these tabs. It is important to remember that accessing these other settings will cancel unsaved changes made on this page.

## Preset Settings Page (cont.)

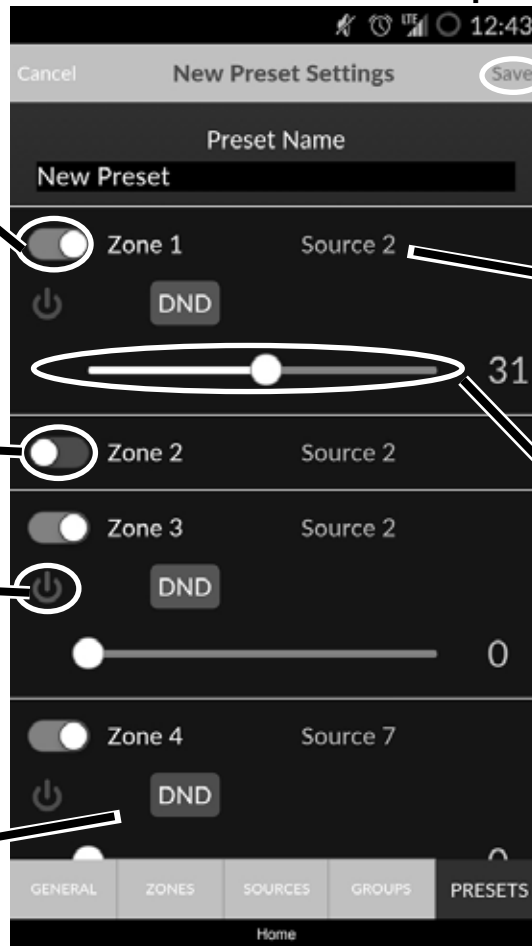
### New Preset Creation Example

Notice that when we select a zone to be included in our new Preset, that zone expands to show the options available to us.

Notice that this zone is not a part of this preset.

Tapping the power buttons here signifies that when the preset is activated this zone will either power ON or Power OFF. Blue = ON. Grey = OFF.

DND sets a zone to DND (Do Not Disturb) when this Preset is activated.



Use this Save button to Save any changes made on this page.

When the Preset is activated, the source for zone will be set based on this section.

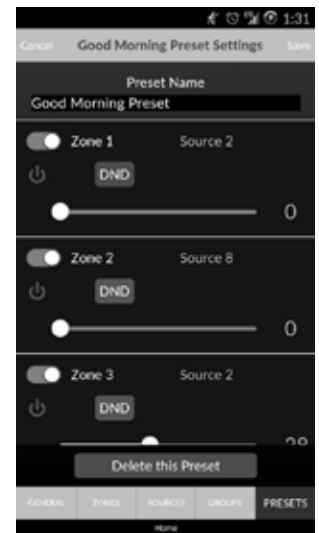
When the Preset is activated, the volume for zone will be set based on this section.



As with Group creation, once a Preset is created it can be easily edited by selecting it from the list of Presets within the Preset Settings Page.

You can edit any of the settings that you have created for a Preset. This also includes Deleting a Preset altogether.

Be sure to Save any adjustments.



**One way to look at Presets and the Preset Creation process is that Presets are things that do not happen immediately, but are going to happen when the preset is activated.**

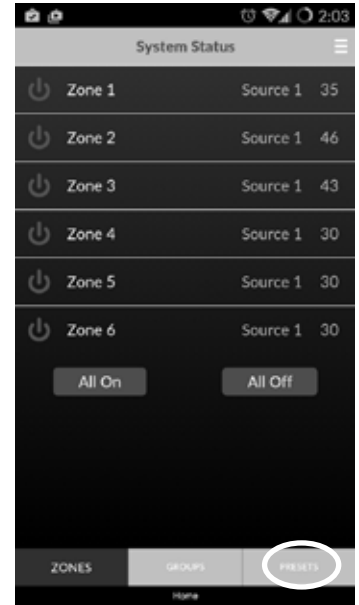
**Note:** Some features (such as DND) will not be available for the Mid-Level system Preset creation.

## Preset Selection Page

Once you have created a Preset, you likely want to use the Preset in your system. The easiest way to do this is by accessing the Preset Selection page via the System Status page. (See image to the right.)

On the Preset Selection Page, you will find the list of Presets that you have created on your handset.

Below you will see a Preset that we created previously in the Preset Settings page.



### Preset Selection Page

Tapping here will take you back to the System Status Page.



Settings Button - Open a settings drop-down.

Tapping here will immediately apply any settings that you have assigned to the Preset. Essentially activating the Preset

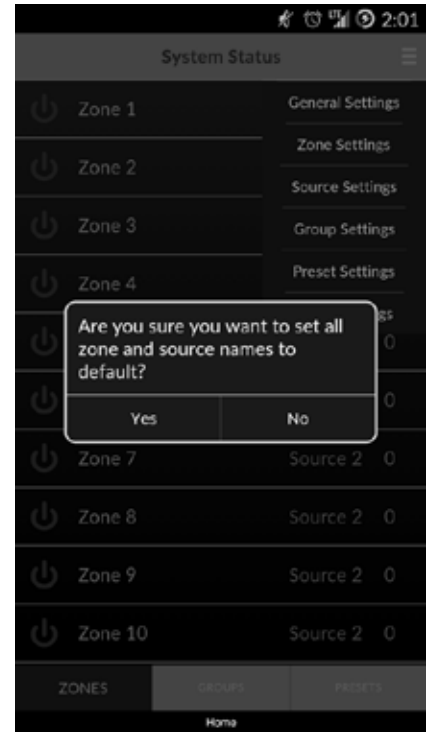
Tapping here will take you back to the System Status Page.

Tapping here will take you to the Presets Page.

## Reset Settings

There may be a point in time when you would want to reset the names of your Zones and Sources. This can easily be accomplished by accessing the Reset Settings option. To access Reset Settings, tap the Settings icon (☰), and then select Reset Settings from the drop-down menu. For more information about accessing the Valet App Settings see the “Accessing Valet Settings” section.

Once you select the Reset Settings option from the drop-down menu, you will be given a message to confirm the action. Pressing Yes will reset the names of All Zones and Sources within the Valet App of that specific handset only.



## General Settings

The last setting within the Settings drop-down is General Settings. The reason we have saved this for last is that, once you have gone through the Valet Setup as described in our other step-by-step document, you should not have to access the General Settings.

If you feel that your app is not configured correctly or is not responding, we will be glad to walk you through adjusting the General Settings. Contact us: via email at : [valet@htd.com](mailto:valet@htd.com) or call us Toll-Free at: **866-HTD-AUDIO (483-2834)**.





