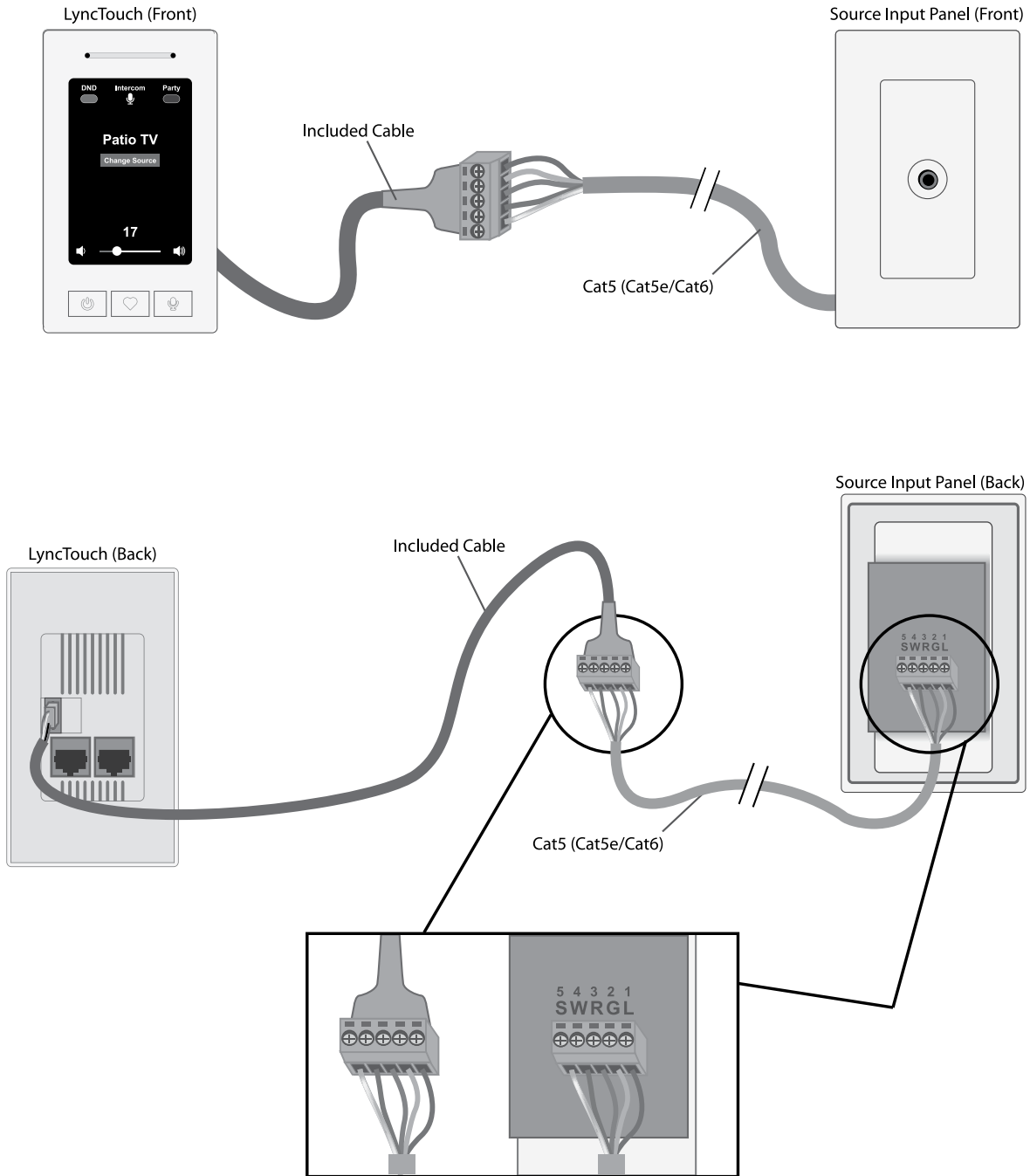


Connecting the Source Input Panel to the LyncTouch



Notice that both connectors are wired in the same color configuration. Also note that the wire colors used here are for demonstration purposes only. Any of the cat5 conductors can be used as long as the connectors are wired identically. Lastly, notice that the connectors here are oriented to emphasize correct conductor placement.

Warranty

All HTD electronics carry a two-year parts and labor warranty. Warranty registration occurred automatically at the time your order was placed. There is no need to complete or mail in additional paperwork.

If you have any questions, we can be reached at...
info@htd.com or toll free 1-866-HTD-AUDIO (483-2834)

Home Theater Direct, Inc.
www.htd.com

Expert Support:
Toll free: 866-HTD-AUDIO (483-2834)
info@htd.com