



HTDNET-MC

Installation & User's Manual

Home Theater Direct, Inc.
www.htd.com

Expert Support:
866-HTD-AUDIO (483-2834)
info@htd.com

Home Theater Direct End-User License Agreement (“EULA”)

THIS IS THE END-USER LICENSE AGREEMENT FOR SOFTWARE FOR HTDNET-MC, EITHER BUNDLED WITH HARDWARE OR PROVIDED SEPARATELY. **IMPORTANT** PLEASE READ THE TERMS AND CONDITIONS OF THIS LICENSE AGREEMENT CAREFULLY BEFORE INSTALLING OR USING THIS SOFTWARE: This License Agreement (“EULA”) is a legal agreement between you (either an individual or a single entity) and Home Theater Direct, Inc for the Home software product identified above which may include associated software components, media, printed materials, and “online” or electronic documentation (“SOFTWARE PRODUCT”). By installing, copying, or otherwise using the SOFTWARE PRODUCT, you agree to be bound by the terms of this EULA. This license agreement represents the entire agreement concerning the program between you and Home Theater Direct (HTD), (referred to as “licenser”), and it supersedes any prior proposal, representation, or understanding between the parties. If you do not agree to the terms of this EULA, do not install or use the SOFTWARE PRODUCT.

The SOFTWARE PRODUCT is protected by copyright laws and international copyright treaties, as well as other intellectual property laws and treaties. The SOFTWARE PRODUCT is licensed, not sold.

1. GRANT OF LICENSE.

The SOFTWARE PRODUCT is licensed as follows:

(a) Installation and Use.

Home Theater Direct (HTD) grants you the right to install and use copies of the SOFTWARE PRODUCT on computing hardware for which the SOFTWARE PRODUCT was designed.

(b) Backup Copies.

You may also make copies of the SOFTWARE PRODUCT as may be necessary for backup and archival purposes.

2. DESCRIPTION OF OTHER RIGHTS AND LIMITATIONS.

(a) Maintenance of Copyright Notices.

You must not remove or alter any copyright notices on any and all copies of the SOFTWARE PRODUCT.

(b) Distribution.

You may not distribute copies of the SOFTWARE PRODUCT to third parties.

(c) Prohibition on Reverse Engineering, Decompilation, and Disassembly.

You may not reverse engineer, decompile, or disassemble the SOFTWARE PRODUCT, except and only to the extent that such activity is expressly permitted by applicable law notwithstanding this limitation.

(d) Rental or Sale.

You may not rent, lease, sell or lend the SOFTWARE PRODUCT.

(e) Support Services.

Home Theater Direct (HTD) may provide you with support services related to the SOFTWARE PRODUCT (“Support Services”). Any supplemental software code provided to you as part of the Support Services shall be considered part of the SOFTWARE PRODUCT and subject to the terms and conditions of this EULA.

(f) Compliance with Applicable Laws.

You must comply with all applicable laws regarding use of the SOFTWARE PRODUCT.

3. TERMINATION

Without prejudice to any other rights, Home Theater Direct (HTD) may terminate this EULA if you fail to comply with the terms and conditions of this EULA. In such event, you must destroy all copies of the SOFTWARE PRODUCT in your possession.

4. COPYRIGHT

All title, including but not limited to copyrights, in and to the SOFTWARE PRODUCT and any copies thereof are owned by Home Theater Direct (HTD) or its suppliers. All title and intellectual property rights in and to the content which may be accessed through use of the SOFTWARE PRODUCT is the property of the respective content owner and may be protected by applicable copyright or other intellectual property laws and treaties. This EULA grants you no rights to use such content. All rights not expressly granted are reserved by Home Theater Direct (HTD).

5. NO WARRANTIES

Home Theater Direct (HTD) expressly disclaims any warranty for the SOFTWARE PRODUCT. The SOFTWARE PRODUCT is provided ‘As Is’ without any express or implied warranty of any kind, including but not limited to any warranties of merchantability, non-infringement, or fitness of a particular purpose. Home Theater Direct (HTD) does not warrant or assume responsibility for the accuracy or completeness of any information, text, graphics, links or other items contained within the SOFTWARE PRODUCT. Home Theater Direct (HTD) makes no warranties respecting any harm that may be caused by the transmission of a computer virus, worm, time bomb, logic bomb, or other such computer program. Home Theater Direct (HTD) further expressly disclaims any warranty or representation to Authorized Users or to any third party.

6. LIMITATION OF LIABILITY

In no event shall Home Theater Direct (HTD) be liable for any damages (including, without limitation, lost profits, business interruption, or lost information) rising out of Authorized Users’ use of or inability to use the SOFTWARE PRODUCT, even if Home Theater Direct (HTD) has been advised of the possibility of such damages. In no event will Home Theater Direct (HTD) be liable for loss of data or for indirect, special, incidental, consequential (including lost profit), or other damages based in contract, tort or otherwise. Home Theater Direct (HTD) shall have no liability with respect to the content of the SOFTWARE PRODUCT or any part thereof, including but not limited to errors or omissions contained therein, libel, infringements of rights of publicity, privacy, trademark rights, business interruption, personal injury, loss of privacy, moral rights or the disclosure of confidential information.

Installing the HTDNET-MC Server

PLEASE READ THIS DOCUMENT BEFORE YOU INSTALL AND USE THIS DEVICE.

The HTDNET-MC™ device is used to connect an HTD MC-66™ or an MCA-66™ Whole-House Controller into your home's wireless or wired network. The HTDNET-MC will not work with HTD's Lync6™ or Lync12™ Controllers.

When properly installed and configured, you will be able to control up to six (6) Zones of an MC-66 or MCA-66 Whole-House Controller from a wireless or wired portable computing device (such as a PC, Mac™, iPod Touch, iPhone™, Android™ or other "smartphone" devices.) Your computing device must have access to your home's wireless or wired network.

HTDNET-MC, MC-66, MCA-66, Lync6 and Lync12 are Trademarks of Home Theater Direct, Inc. and HTD Mac, iPod Touch and iPhone are Trademarks of Apple Computer
Android is a Trademark of Google

The HTDNET-MC product includes the following items:

1. One (1) HTDNET-MC Server unit (software is already installed in it)
2. One (1) 120/240VAC Power Supply & Cord (with international adapters)
3. One (1) 6 foot-long RS232 Serial Cable for connecting between the HTDNET-MC Server and the RS232 Serial Connector on the back of your MC-66 or MCA-66 Controller
4. One "Null Modem Mini Adapter" plug (attaches to the end of the Serial Cable)



You will also need a Cat5e cable (**NOT included**), with male RJ45 connector tips on each end. The Cat5e cable must be long enough to connect from the HTDNET-MC Server unit, directly into your network Router or to another connection point on your home's computing network.

Installing the HTDNET-MC Server

Getting Started:

1. Connect the RS232 Serial Cable (with the Null Modem Mini Adapter attached) to the back of the MC-66 or MCA-66 Controller (where it is labeled "RS232 INTERFACE"), and to the HTDNET-MC Server unit.
2. Connect a Cat5e (or Cat6) cable from the HTDNET-MC Server, to one of the available "LAN" ports on your network Router or into another available connection in your network.
3. Plug the Power Supply into an available 120 VAC electrical outlet & it to the HTDNET-MC Server.
4. The HTDNET-MC Server's operation LEDs will light, and it will go through "self-diagnostics". After a short period of flashing LEDs, the following LEDs will stay illuminated:
 - a. Power
 - b. 10/100 Mb Link
 - c. Status
5. The "10/100 Activity" LED will flash randomly, indicating that it is communicating with your Router.
6. Your network Router will automatically recognize the presence of the HTDNET-MC Server, and will assign it a unique network number, known as an internal "IP Address". An IP address is made up of four groups of numbers, separated by periods (for example, 192.168.1.10) As long as the HTDNET-MC Server unit stays connected to your network, its assigned internal IP Address will stay the same.
7. Now, in order to access the HTDNET-MC Server from your portable phone or other device, you will need to know what "IP Address" your router assigned to the HTDNET-MC Server.
8. **Preferred method for determining your HTDNET-MC Server's IP address:**
 - Download and use a free utility called "Fing" directly onto your handheld device.

For iPhone, iPad, iPod-Touch or Android users:

- Go to the Apple iTunes/App Store (Apple devices) or Android Market (Android devices) and search for "Fing". It's from a company called "OverLook" - It's a FREE download and there are no usage fees.
- Select and install "Fing" on your device.
- Make sure your device has access to your wireless network.
- Run "Fing" on your device. You'll see a screen similar to the one below.



Installing the HTDNET-MC Server

- On the **Fing** screen, you will see a list of all the devices currently operating on your network. On the right side of the Fing screen, look for a device with the name "PRONET". That is the HTDNET-MC server. To the left of that, you will see the device's IP address (in the example above, it is shown as "192.168.1.10" - Your HTD NET-MC's IP address will likely be different.)
- Write down the IP Address shown for "PRONET" on YOUR screen here: _____ . _____ . _____ . _____

9. Now, open a web browser on your phone or portable device.

10. In the address bar (not the search bar) at the top of the web browser, enter the IP Address you just found, followed by **"/keypad.html"** (no spaces.) Using the example from the example above, your entry would look like this:

192.168.1.10/keypad.html (your numbers will likely be different)

11. Now press the **"enter"** button on your portable device (or whatever you normally press on your portable device after entering a website address), to go to that website.

12. You should now see a screen on your portable device that looks like the one below.



13. Next, save that IP/Device address as a Shortcut or Favorite on your device.... and in the future, you won't have to enter it again. For example, you could save it as **"HTD Keypad"**. Next time you can just go to your shortcuts and tap on it.... and your **"HTD Keypad"** will be ready to go.

14. Now read through the Quick Start Guide for using the software.

If you instead plan to use **"Fing"** from a PC or Mac to find your IP address:

1. Go to www.over-look.com
2. At the top of the site, click where it says **"Download"**
3. On the next page, download Fing version 1.4, for the device you will plan to install and run it on.
4. After you install it, the first time it runs, it will try to ask you several questions. Don't worry about answering those questions.... just close that window and then do the following:

Run **"Fing"** on Windows Vista & Windows 7 users:

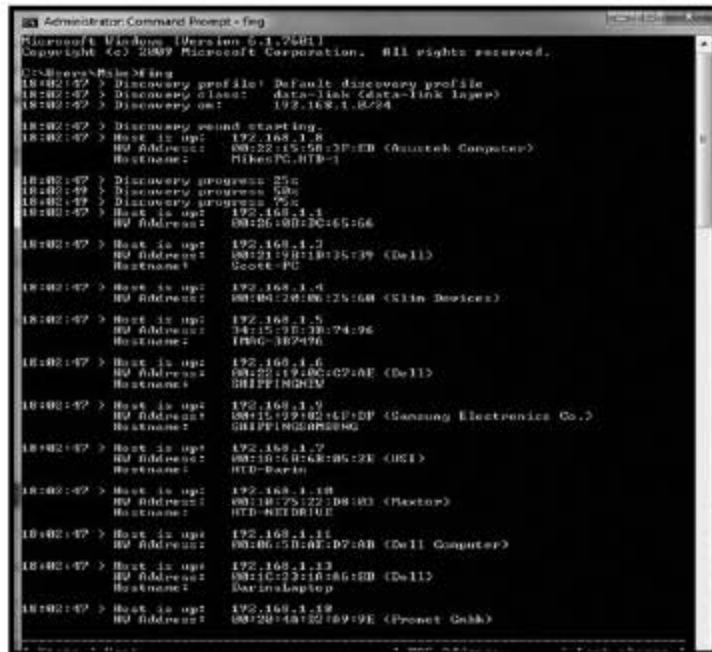
- With your mouse, click on Windows Start, and look for the **"Search Programs and Files"** box at the bottom of the pop-up Start window.
- Type **"cmd"** in the search box and press the **"Enter"** key. A window with a black background will pop-up.
- In the windows, to the right of **C:\>** where the cursor is blinking, type **fing**, then press the **"Enter"** key.
- Fing will run and you will see the list of device Names and IP Addresses.

Installing the HTDNET-MC Server

Run "Fing" on Windows XP users:

- With your mouse, click on Windows Start, then click on "Run".
- Type "cmd" in the search box and press the "Enter" key. A window with a black background will pop-up.
- In the windows, to the right of C:\.....\...> where the cursor is blinking, type **fing**, then press the "Enter" key.
- **Fing** will run and you will see the list of device Names and IP Addresses

The Fing window for the PC or Mac will look something like this:



Write down the IP Address shown for "PRONET" on YOUR screen here: _____

- Now, open a web browser on your phone or portable device
- In the address bar (not the search bar) at the top of the web browser, enter the IP Address you just found, followed by "/keypad.html" (no spaces.) Using the example from our screen above, your entry would look like this:

192.168.1.10/keypad.html (your numbers will likely be different)

- Next press the "enter" button on your portable device (or whatever you normally press on your portable device after entering a website address.
- You should now see a screen on your portable device that looks like the one on the **previous page**.
- Next, save that IP/Device address as a Shortcut or Favorite on your device.... and in the future, you won't have to enter it again. For example, you could save it as "HTD Keypad". Next time you can just go to your shortcuts and tap on it.... and your "HTD Keypad" will be ready to go.
- Now read through the HTDNET User's Manual that follows for using the software.

Call us with any questions:

HTD - 1-866-483-2834

HTDNET User's Manual

Use the dropdown windows in the center of the display to select a source, set the volume and/or mute a zone. When a zone is muted the "Mute" button will be red.



Screen appearance will vary slightly depending on device and browser

Status

Master Bed

Patio

Kitchen

Garage

Bobs Room

Great Room

Group

Press the Status Button to check the current status of a selected zone or to refresh the keypad display on your smart device.

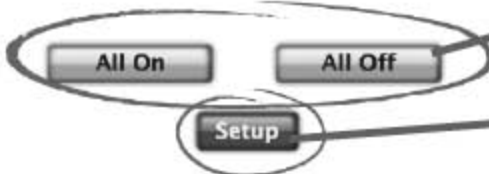
Press one of these buttons to select the zone you want to control. The button turns red for the zone being controlled. All zones that are "ON" have a blue light to the left of the zone name button.

Press the "Group" button to select multiple zones at one time. Touch the "Group" button again to exit multiple zone control.

Press the "Group" button to select multiple zones at one time. Touch the "Group" button again to exit multiple zone control.

Once you select a zone you can turn the individual zone "ON" or "OFF" by pressing the "ON" or "OFF" buttons.

All zones can be turned "ON" or "OFF" by pressing the 'All On' or 'All Off' buttons.



Use the Setup Button to enter the Setup Screen in order to name your sources and your zones

Status Button - The status button is used to check the current status of a zone. This essentially refreshes the keypad display on your smart device or computer. This will be used when you have a zone selected on your device that has been set to a specific source and volume level by another user. In order to see the source and volume that user set the zone to you will need to press the status button. The status button can also be used after exiting "Group" mode. Group mode is explained below.

Zone Selection Buttons - The zone selection buttons are used to select the zone you want to control. Every zone that is currently "ON" will have a blue light to the left of the button. The zone that is currently selected on the smart device being used will be 'RED' in color. All non-selected zones will be 'GRAY' in color. You can select multiple zones by pressing the Group button.

Group Button - The Group button can be used to control any combination of two or more zones at a single time. To use the Group button you will press the Group button first. Once you have entered Group mode the Group button will now be 'RED'. Then press the button for every zone you want to control. Every zone that gets selected will turn 'RED', and all non-selected zones will be 'GRAY'. When in Group mode any changes to source and/or volume will be made to all selected zones. If you want to turn all zones "ON" or "OFF" you may do so by selected all of the zones in Group mode, or you can press the "All On" or "All Off" buttons below the virtual keypad on your device.

On and Off Buttons - These buttons are used to turn the selected zone(s) "ON" or "OFF".

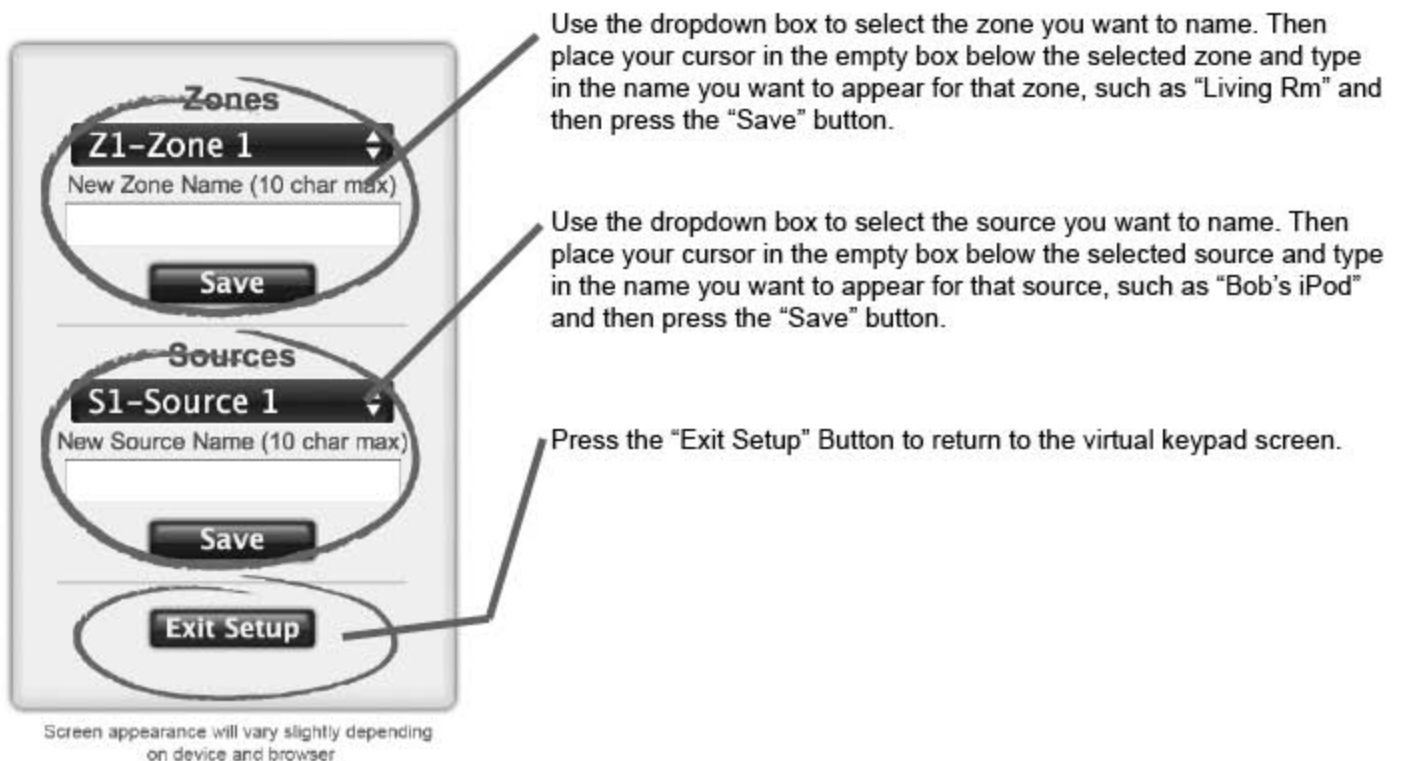
HTDNET User's Manual

Source Dropdown Box - This dropdown box is used to select the source you want to play in the selected zone(s).

Volume Dropdown Box - This dropdown box is used to set the volume in the selected zone(s). Either a drop-down or scroll wheel will be used (depending on device and browser) to select a volume between 0 and 60. Volume changes adjust smoothly over a few seconds

Mute - Press the button to mute the sound in your selected zone(s). If a zone is muted then the mute button will be 'RED', and when a zone is not muted the mute button will be 'BLACK' with a blue box around it.

All On and All Off Buttons - These buttons are used to turn all zones "ON" or "OFF" at one time. You do not have to be in Group mode for these buttons to work.



Zone Dropdown Box - Use the Dropdown box to select the zone you want to name/re-name. Once you have selected a zone to name you will then tap the empty box below the zone dropdown box and type in the new name of the zone and then press the save button.

Source Dropdown Box - Use the Dropdown box to select the source you want to name/re-name. Once you have selected a source to name you will then tap the empty box below the source dropdown box and type in the new name of the source and then press the save button.

Exit Setup Button - Press this button once you have named all of your zones and sources. Once you press this button you will be returned to the virtual keypad screen.