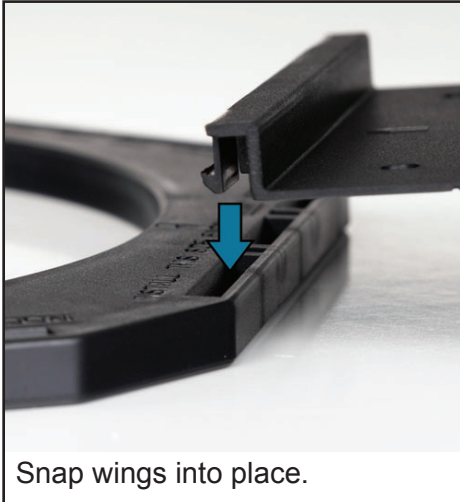
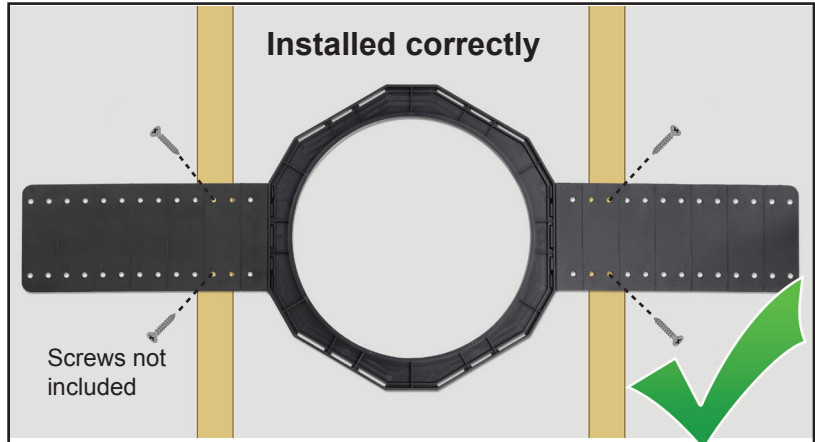


Install these brackets between studs or joists before the drywall goes up during new construction or a major renovation. While not required for most in-wall and in-ceiling speakers, these pre-construction brackets provide a template for the dry-wall installer to quickly and accurately cut the hole for you. These brackets were custom designed to fit our HDX and SDX in-ceiling and in-wall speaker lines. They may also work with other brands but check the dimensions carefully before using!

### STEP 1

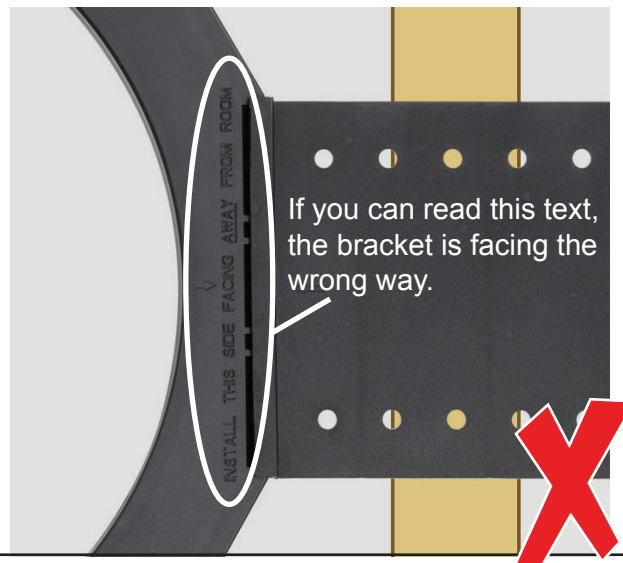
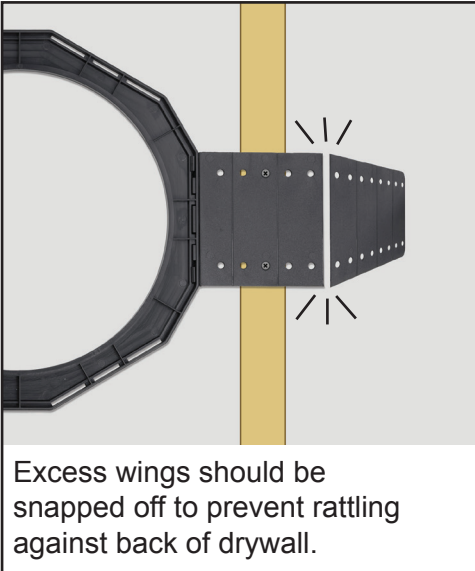


### STEP 2

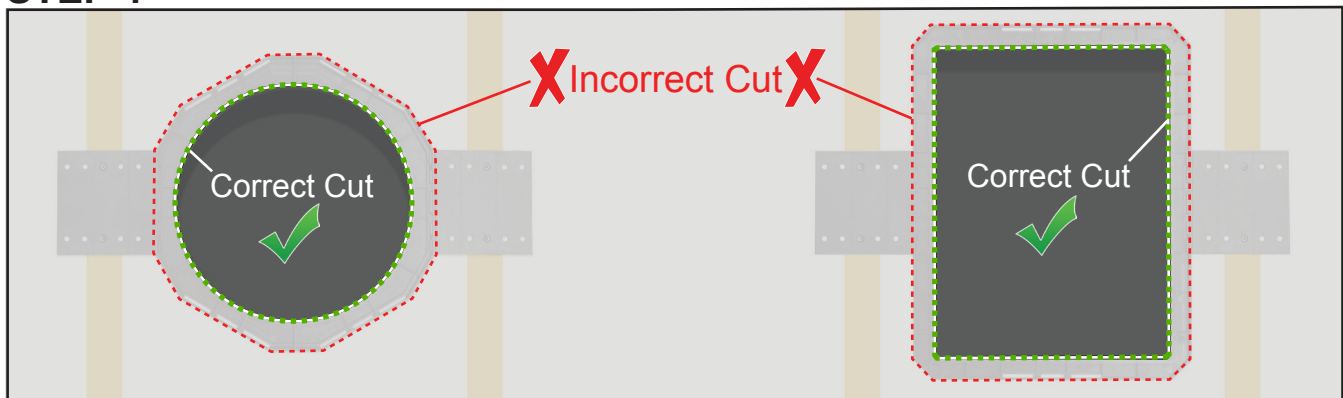


Long wings allow variable placement between studs positioned up to 24" apart. If using a power tool, be careful not to over-torque and crack the plastic. Nails are not recommended.

### STEP 3



### STEP 4



### Model BRX-R65



**Fits:**



**HDX-R65**



**SDX-R65**



**SDX-S65**

### Model BRX-R80



**Fits:**



**HDX-R80**

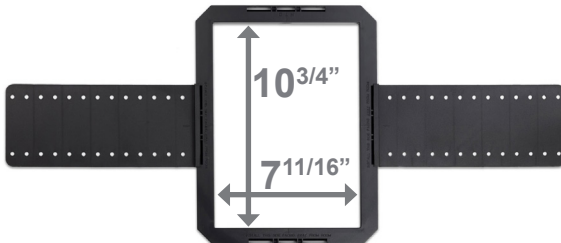


**HDX-R65AIM**



**SDX-R80**

### Model BRX-W65



**Fits:**

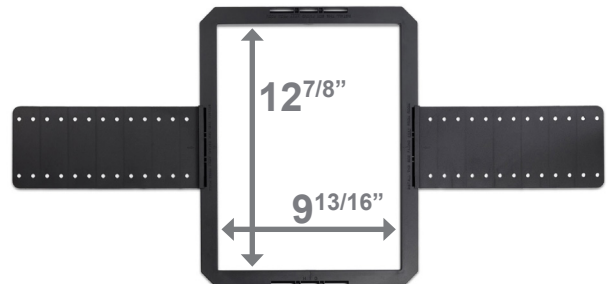


**HDX-W65**



**SDX-W65**

### Model BRX-W80



**Fits:**



**HDX-W80**



**SDX-W80**

**Home Theater Direct, Inc.**  
[www.htd.com](http://www.htd.com)

Expert Support:  
972-312-9900  
Toll free: 866-HTD-AUDIO (483-2834)  
[info@htd.com](mailto:info@htd.com)