

Mount Kit for Alexa Dot (Gen 1 & 2) and Echo Input

Our innovative solution provides all you need to install your Amazon Echo Dot (Gen 1&2) or Echo Input into the ceiling or wall of any room and extend Alexa’s audio output into your own speakers. A single Cat cable carries both the power for the Echo device and its audio signal back to your equipment over a distance up to 200 feet. We are certain you will find this feature not only incredibly useful and convenient but also fun!

What’s Included:



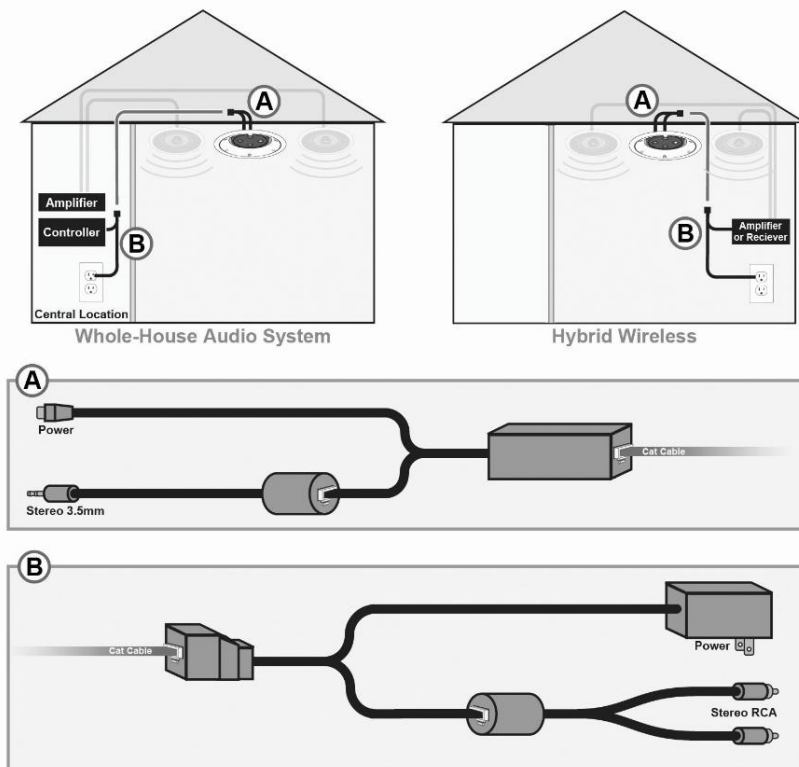
Ceiling / Wall Mount bracket that securely holds the Amazon Echo Dot (Gen 1&2) or Echo Input.

Two grille cover options: one that reveals a modest trim similar to canned lighting; one “trimless” design that covers the entire mount.

UL listed POE (power-over-ethernet) power supply, injector, and custom power/audio splitter & micro USB adapter

2 stereo audio adapters: 1 plugs into the Echo device; 1 plugs into your audio equipment

Best Uses:

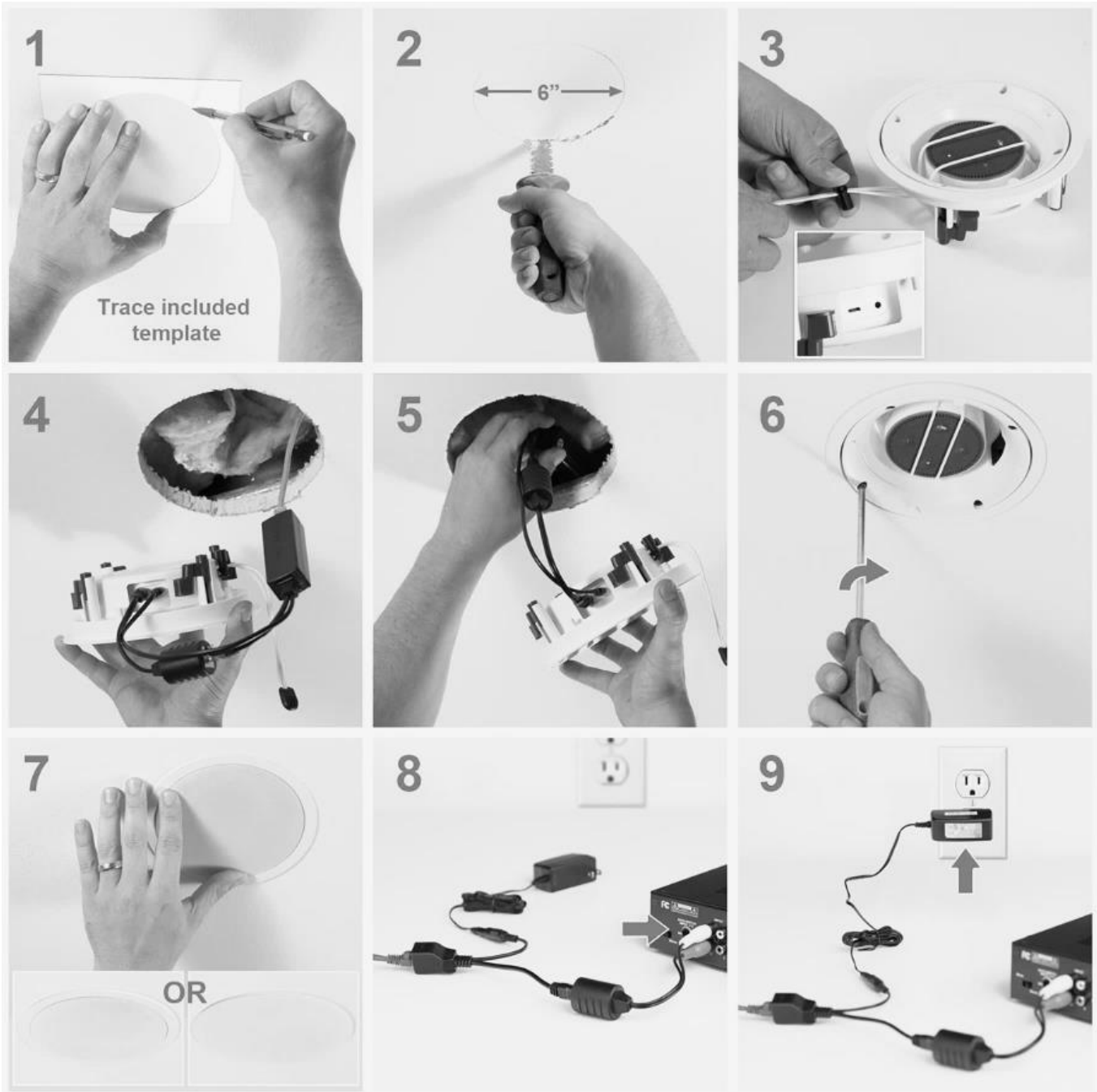


Connect to a Whole House Audio System. The Echo device becomes a source that you can control by voice (and within the Alexa app) and easily make available to other zones in the home.

Build a Hybrid Wireless Whole-House Audio System. Create individual zones and then pair the Echo devices together to have multiple zones listen to the same source.

Connect to Any Amplifier with ADS™ (Auto Detect and Switch). When used as the primary or Voice Assistant input, the audio from the Echo device is heard whenever you need it, even if you were already listening to a different source.

How to Install:



We're here to help! If you have any questions or would like to discuss your home audio needs in general, we are available toll free: 866-HTD-AUDIO (866-483-2834) and local: 972-312-9900, M-F 8am-6pm Central.

Home Theater Direct, Inc. (HTD)
1000 Shiloh Rd, Suite 100
Plano, TX 75074
www.htd.com