

Getting Started with the HTD Lync App and HTD MC App

Being able to control your entire Whole-House Audio system from your iPhone, iPad, Android phone, or tablet is both convenient and fun! This document will help get you quickly set up and using the app. The HTD Lync app is compatible with models Lync 6 and Lync 12. The HTD MC app is compatible with models MC-66 and MCA-66. We are here to help: 866-HTD-AUDIO and apps@htd.com.

Getting started is as easy as 1, 2, 3 . . .

STEP 1: Connect the gateway to your Whole-House Audio Controller and attach it to your home's network.

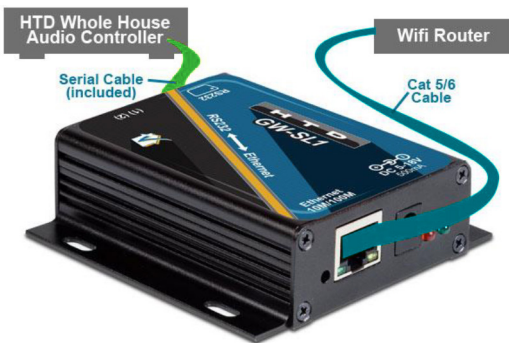
STEP 2: Download and set up the appropriate HTD app (Lync or MC) for your system.

STEP 3: Use the HTD app for complete control of each and every zone!

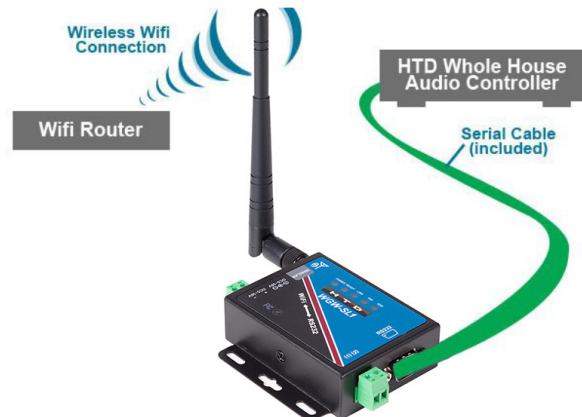
STEP 1: Connect the Gateway – model GW-SL1 or WGW-SL1

The “gateway” uses your home’s existing Wi-Fi network to coordinate commands and system status between your phones/tablets (up to 8 simultaneously) and the Whole-House Audio Controller. Your Wi-Fi network does not have to be connected to the internet to control the system from within your home.

Gateway Model: GW-SL1



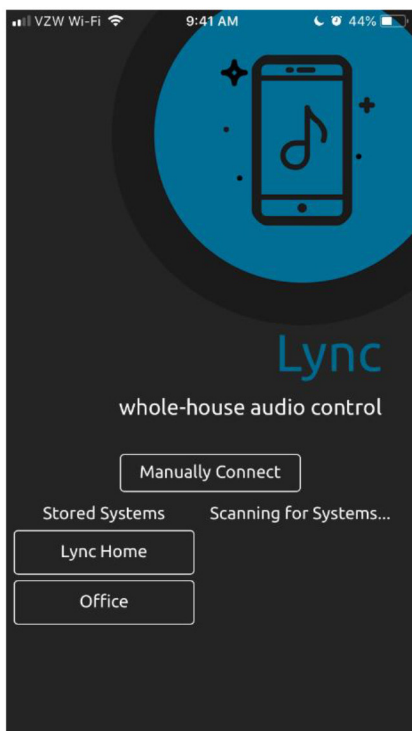
Gateway Model: WGW-SL1



1. Connect the gateway to your home network:
 - a. **GW-SL1** Connect a Cat 5 or 6 Ethernet cable to the Ethernet port on the GW-SL1 and an open port on your home's router (or network bridge).
 - b. **WGW-SL1** Follow the instructions provided on Page 4 titled, “How to Attach the WGW-SL1 Wirelessly to Your Home's Wi-Fi Router”.
2. Connect the serial cable (provided with the gateway) to the RS232 port on the gateway and to the RS232 port on the back of your Whole-House Audio Controller.
3. Attach the power adapter to the gateway and plug it into an electrical outlet.

STEP 2: Set Up the HTD App

We have made the setup process quick and easy. You only need to follow these instructions one time. From that point forward, the app will simply open already connected to your system. If for some reason you need to disconnect the app from your system, you can do so from the main menu.



Make sure your device (smart phone, tablet, etc.) is connected to the same Wi-Fi network as your gateway. When you first open the app, the app immediately begins scanning your Wi-Fi network for a compatible gateway (such as our GW-SL1 and WGW-SL1). **Depending on your phone's and router's security settings, the app may or may not autodetect the gateway.** The app can take up to 1 minute to auto-detect the gateway, depending on the complexity of your network. **If the app does not auto-detect your gateway, follow the instructions in the addendum to manually connect.**

If the app auto-detects the gateway, its IP address will be displayed below "Scanning for Systems..." Simply click on that IP address and enter a name for your system. You can simply name it "MC", "Lync", "Lync Home", "Whole House Audio" or something similar. However, if you are connecting more than one system in your home, or if you have a second home or place of business that also has an HTD system installed, then your description might be something more like "Upstairs", "Downstairs", "Indoors", "Outdoors", "Vacation Home", "Office", "Restaurant", etc.

Once you click on OK, the app will open and begin populating your zones and sources. After a few seconds, you can begin using the app!

PLEASE NOTE:

- By default, custom settings are "locked" by a four-digit code to prevent anyone with access to your Wi-Fi network from downloading the app and making changes. This code is provided to you at time of purchase. A customer support rep can also assist you with your initial unlock code that can later be changed in System Settings. Being able to lock the custom settings is often useful when setting up the app on a device used by children and/or guests.
- In our previous app, a username and password were required in order to make use of the Backup and Restore feature. With the new app, this is no longer necessary. In fact, you can now backup and restore two unique profiles with our free cloud as long as your Wi-Fi network has internet access. This makes it easy to set up one device, back it up to the cloud, and then restore those settings to additional smart devices. From that point, you can limit what zones and sources are uniquely available to each device as well as create unique Groups and Presets.
- The HTD app makes it easy to auto-detect systems on different Wi-Fi networks, or switch between systems on the same Wi-Fi network. The app will remember connections it has previously made and will display those connections under "Stored Systems".
- If your router is often changing your IP address, you may want to reserve a specific IP address for the gateway. The steps to reserve an IP address differ depending on the brand of router you own. Your router manufacturer will likely have instructions on their website for how to reserve an IP address, but feel free to reach out to us for assistance.

STEP 3: Use the App

We hope you will find the app intuitive to use, but if not, get more information at . . .

- www.htd.com/Products/Whole-House-Audio/app-lync
- www.htd.com/Products/Whole-House-Audio/app-mc

. . . and watch our video demonstrations:

- In-Depth Look at the HTD Lync App: www.htd.com/lync-app-video
- In-Depth Look at the HTD MC App: www.htd.com/mc-app-video

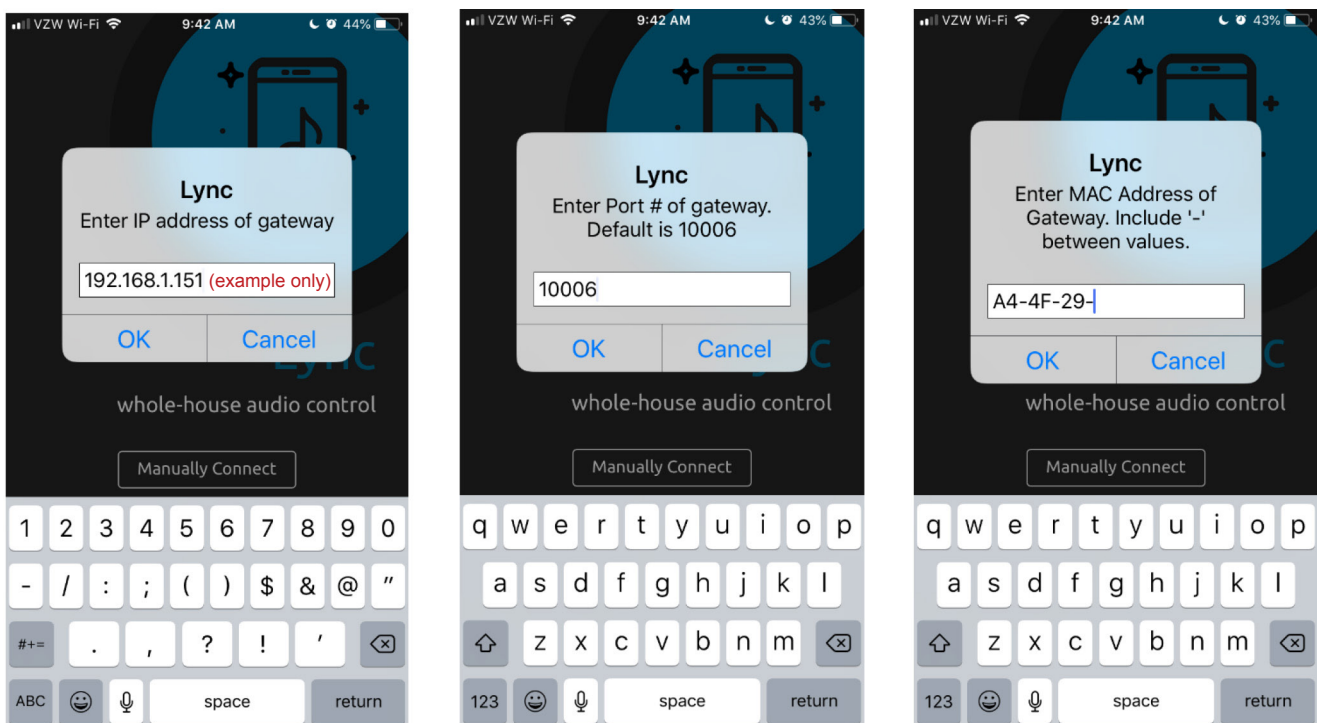
Please submit your questions or comments to apps@htd.com or call support at toll free 866-HTD-AUDIO (866-483-2834) or local 972-312-9900.

Home Theater Direct, Inc.
1000 Shiloh Rd, Suite 100
Plano, TX 75074
www.htd.com

Addendum: What to do if your gateway was NOT automatically detected by the app

Please have the following information handy before you press “Manually Connect”:

- 1.) **The IP address assigned by your router to the gateway.** If you do not know this IP address, please see the section at the end of this addendum.
- 2.) **The port number used by your gateway.** HTD gateways (models GW-SL1 and WGW-SL1) use port 10006 so this number is already entered by default. If you are using a compatible, but non-HTD gateway, you will overwrite this number.
- 3.) **The unique MAC address of your gateway.** Some HTD MAC addresses begin with “A6-4F-29”, but most begin with “A4-4F-29” so this is prepopulated in the app. Finish entering the MAC address (or replace it entirely) following the format “A4-4F-29-##-##-###”. You can find this number printed on a sticker on the bottom of your gateway. If it is missing, please see the section at the end of this addendum. If you are using a non-HTD gateway, you will overwrite the MAC address with your own.



With this information now in-hand, press “Manually Connect” and follow the on-screen instructions.

The last step is to name your system. Once you click on OK, the app will open and begin populating your zones and sources. After a few seconds, you can begin using the app!

How to identify a gateway’s IP address and/or MAC address if the app did not auto-discover it.

Please Note: Some locations have access to more than one Wi-Fi network. Regardless of the method chosen below, make sure the device you choose is connected to the same network as the gateway.

If you have an Android device . . . use the “Fing – Network Scanner” app. Look for a MAC address that begins with A4-4F-29. Note: you cannot use Fing with an iOS device because Apple will block the MAC address.

If you have a PC . . . use “Advanced IP Scanner” found at <http://www.advanced-ip-scanner.com>. Look for a MAC address that begins with A4-4F-29.

If you have an Apple computer . . . use “LanScan”. Look for a MAC address that begins with A4-4F-29.

If you are comfortable accessing your router's data . . . it may provide the IP address and MAC address for network connected devices, often under the heading "Connected Devices" or "Client List". Look for a MAC address that begins with A4-4F-29.

If you have an Apple iOS device . . . sorry, you will have to use one of the options listed above. Apple iPhones and iPads block your ability to view most MAC addresses.

How to Attach the WGW-SL1 Wirelessly to Your Home's Wi-Fi Router

Unlike model GW-SL1 which connects to your home network with an Ethernet cable, the WGW-SL1 connects to your network wirelessly. The WGW-SL1 will broadcast its own Wi-Fi network until you adjust its settings to "attach" it to your existing Wi-Fi network:

1. After you have attached the antenna, plug the WGW-SL1 into an electrical outlet in a location that is within the range of your existing Wi-Fi network.
2. Use a computer, smart phone or tablet to search for available Wi-Fi networks. Select the network labeled "WGW-SL1" and press the "Connect" button.
3. Open a web browser and enter 10.10.100.254 as a website address. A pop-up window will appear requesting the username and password. Enter "admin" in both fields and log in.
4. You should now be viewing the WGW-SL1 configuration pages. In the section titled, "Working Mode Configuration", select "STA Mode" and press "Apply".
5. IMPORTANT: In this step, **please ignore "Restart button in Device Management"**. Instead, click on "STA Interface Settings". Under "STA Interface Parameters", click on the "Search" button.
6. Choose the Wi-Fi network from the list of available wireless networks that belongs to you and click "Apply". A window will pop up stating, "Please Input Key!". Select OK.
7. Now that you are back on the "STA Interface Parameters" screen, enter your WiFi network's password or pass phrase in the area labeled, "Pass Phrase" and click "Apply".
8. This time, you will click on "Restart button in Device Management". On the Device Management page, press "Restart" to reboot the WGW-SL1.
9. Wait about 60 seconds and then close the browser window (even though it may still display "Rebooting").
10. The WGW-SL1 should now be "attached" to your Wi-Fi network. It is okay to unplug or lose power to the WGW-SL1. The settings are maintained so that the next time power is restored, it will automatically reconnect to your Wi-Fi network.

NOTE: Once connected wirelessly, the RJ45 port is disabled. *To reset to factory defaults, depress the button near the antenna for 10 seconds.*

Step 4.

Working Mode Configuration

You may configure the Uart-WiFi module wifi mode and data transfer mode.

☐ AP Mode:
Access Point

☒ STA Mode:
Station Mode

Data Transfer Mode Transparent Mode ▾

Apply Cancel

Step 5.

STA Interface Setting

You could configure STA interface parameters here.

STA Interface Parameters	
AP's SSID	WGW-SL1 Search...
MAC Address (Optional)	
Security Mode	OPEN ▾
Encryption Type	NONE ▾

Apply Cancel

Step 7.

STA Interface Setting

You could configure STA interface parameters here.

STA Interface Parameters	
AP's SSID	Your SSID Search...
MAC Address (Optional)	
Security Mode	WPA2PSK ▾
Encryption Type	AES ▾
Pass Phrase	Your Password

Apply Cancel