

Installing and Using the PC Software for the Lync Whole-House Systems

The software is only for use on PCs running the Windows XP, Windows Vista and Windows 7 operating systems. Once installed on your PC, the software will be able to communicate with the Lync Whole-House Controller over an RS232 Serial cable connected between your PC & the Lync Controller. **Note: If your PC doesn't have a Serial Port, see Page 5 of this document.**

Installing the Software:

1. Download the Lync (**Setup_Lync6_v1.3.exe**) and save it on your PC in a convenient, safe location.
2. Navigate to that file on your PC and double-click on it to begin the installation process.

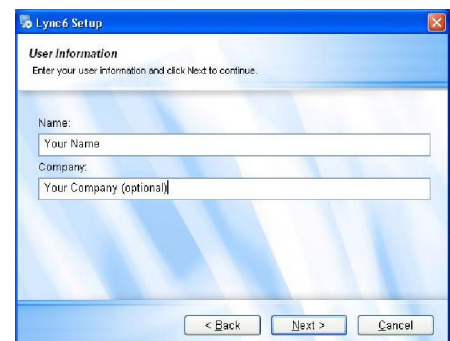
3. After a few moments, on your PC, you will see the screen shown on the right. Click on the **"Next"** button to continue



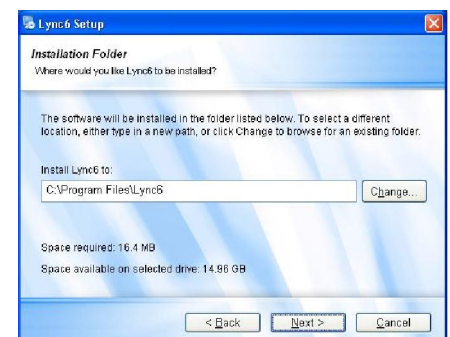
4. You will now see the screen shown on the right. You can read the Use License Agreement and, if you agree to its terms, click where it says, **"I agree to the terms of this license agreement"** click on the **"Next"** button to continue



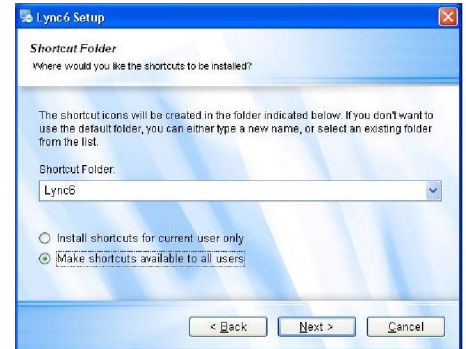
5. If you clicked on the **"Next"** button, you will now see a screen like the one shown on the right. Enter your name and, if desired, your company, then click on the **"Next"** button to continue



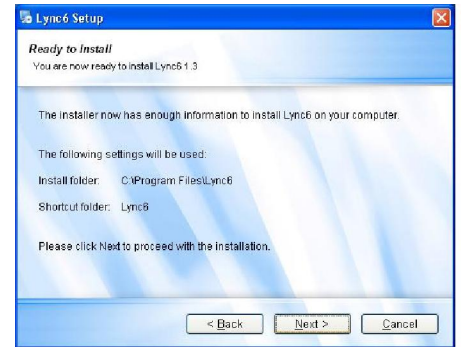
6. You will now see a screen like the one shown on the right. This screen shows where, on your PC, the software will be installed. While you can change this location, we recommend that you leave it at the software's default location and click the **"Next"** button to continue



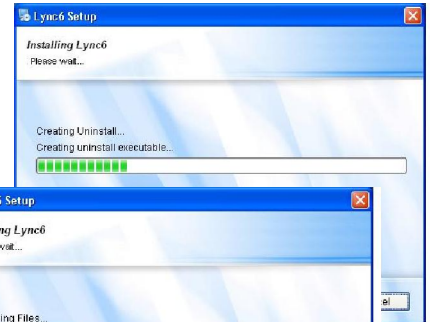
7. The next screen allows the software to place an icon on your PC's desktop and makes it easier and faster to start the program when you're ready to use it. We recommend you click the button that allows the software to create a shortcut that will be available to all users, as shown in the example here. Click on the "**Next**" button to continue.



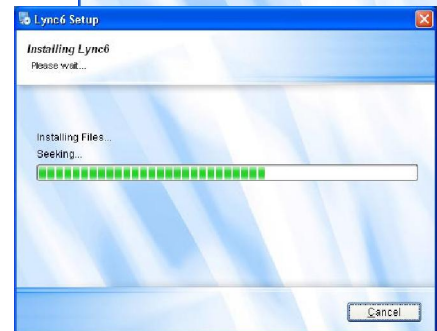
8. The next screen (shown on the right) will confirm that all information has been gathered and the program is ready to install. Click "Next" to continue



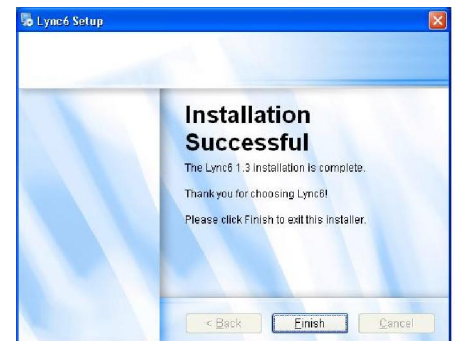
9. You will now see screens showing you that the software is installing. It will take several minutes for this process to complete and you will see changes to the screen as it progresses.



Allow this process to continue without interruption



10. When installation is complete, you will see a screen like the one on the right. Click the "Finish" button to allow the program to finalize and exit.



The software is now installed. Go to the next section to see how to connect your PC to your Lync Controller.

Connecting your PC to the Lync Controller:

The software, running on your PC, will communicate with the Lync Controller over a standard 9-pin, RS232 Serial Cable with 9-pin male connectors on each end (these are available from many online or from electronics stores near you.) If you try to run the Lync software without a Serial cable, and/or without your Lync Controller powered on, you will get the following error message on your PC screen:



If your computer does not have an RS232 Serial Port (sometimes referred to as a COM port), but does have an available USB port, you can purchase a USB-to-Serial adapter and software driver for \$20-\$35 (available from many online or from electronics stores.) If you have questions about this, please give us a call at HTD and we'll help you.

Connect an RS232 Serial Cable from your computer to the port on the back of the Lync Controller, shown below



Using the Lync Software:

Once you have the cable connected between your PC and the Lync Controller, start the Lync software on your PC by clicking the "**Lync6**" shortcut icon on your PC's Desktop. If you didn't create a shortcut on your Desktop, you can find and start the Lync6 Software by using your Windows Start button.

The Lync software will start and communicate via the Serial cable with the Lync Controller. You will see a screen similar to the one shown below:



With your mouse, click on the "Power ALL ON" button at the bottom left of the screen. This will turn on all Lync Zones in the system, and the screen will change to look similar to that below:



Editing Zone Names: At first install, your Lync Zones are named as Zone 1, Zone 2, Zone 3, etc. You can easily edit the Zone names to be what you want. Click with your mouse inside the ZONE NAME box for the Zone you wish to rename. Then, type in the new name you want (up to 10 characters) and press your PC keyboard's Enter key. We suggest you use Zone names that would be familiar to other users (Kitchen, Den, Patio, Johnny, etc.) That will make it very easy for other users to properly select the Zone they wish to Intercom with. You will notice that some of the Zones in our example above have been renamed.

Editing Source Names: At first install, Source Names are named as Source 1, Source 2, Source 3, etc. You can edit them by clicking in the SOURCE box for the Source you want to rename. Enter your new Source Name (up to 10 characters) and press your PC keyboard's Enter key to save it. You don't need to put in the Zone number... the Lync software will do that when you save it.

Source names make it easy for other users to know what Source they are selecting. Source names are specific to where a Source device is connected. It's a good idea to give your permanent, centrally-connected Sources specific names (DirecTV, BluRay, Tuner, Onkyo, iPodDock, etc) so that a user would easily be able to know what he/she is selecting.

It's not a good idea to assign a device name (for example, iPod) to a device that is portable and will likely be carried around for connection directly into any of the LyncPads. A user would see "iPod" as a source but would not know where to "find" it. Since Zone Sources are typically where portable devices get connected, it's a good idea to give a Zone Source the same name as its Zone Name. For example, If Zone 3 is named "Patio", it's a good idea to also name

Source 3 as "Patio". That way, if a user selects the Source named "Patio" he/she will be hearing whatever device is connected to the Patio's LyncPad, whether it's an iPod or some other device.

Zone Volume, Bass, Treble, Balance adjustments: Click on the small, square buttons (in the "Volume" column above) to switch between Volume, Bass, Treble and Balance. Then, use the Up or Down arrows to adjust to your preference. Each Zone can be adjusted independently this way.

Power On/Off & Do Not Disturb (DND): You can turn any Zone On or Off and set Do Not Disturb for any zone by clicking on these buttons. You can also turn all LyncPad zones ON or OFF by using the ALL ON and ALL OFF buttons at the bottom of the screen. When all LyncPads are turned off, the Amplifier is triggered into an extreme low-power, energy saving mode. When any LyncPad is turned on, the Amplifier comes back up to standard power.

Source Selection: You can select the Source for any zone by clicking the Source up/down buttons for that zone until you see the desired source.

MP3 Control: You can manage the internal MP3 player using the controls near the bottom of the screen. When a song is playing through the MP3 player, the song title and artist information will be displayed in the window (if that data was saved with the MP3 recording.)

Memory Settings: You can save up to three (3) different configurations of settings by clicking on one of the Memory buttons (M1, M2, M3) then clicking on the SAVE button. This makes it easy and fast to bring all zones to a pre-configured state (such as All-House Party mode, etc.)

When you exit the software, your last settings are automatically saved into the Lync Controller's memory.

What if your PC doesn't have an RS232 Serial Port?

If your PC does not have an RS232 Serial Port (some don't), you can purchase a "**USB-to-Serial adapter**" and the needed software driver online, or from many local electronic or computer stores for \$14 - \$20. This adapter will allow connection of the RS232 Serial cable through one of the available USB ports on your computer and the Lync software will then be able work.

What USB-to-Serial adapter should you use?

There are a wide range of brands and styles available in local electronics or computer stores and online and any of them should work fine. If you can't find one locally, go on the Internet and do a Google search on the phrase, "**USB-to-Serial adapter**". You will find many available in a wide range of prices from online providers. We have done testing with good results using a Model PL-2303 unit made by Prolific Technologies and sold by any number of online resellers.

Wherever you purchase the adapter, be sure it includes, or that you can download the correct software driver for the adapter and your computer's Windows operating system (XP, Vista, 7, etc).... the seller where you're getting the adapter will have the software driver and it should be no extra charge.

Install the adapter's software driver first on your PC BEFORE you try connecting the adapter. Follow the instructions provided by the seller you got the adapter from.

Once you've got the adapter's software driver installed, plug the adapter into one of your PC's available USB ports. Next, connect an RS232 Serial cable from the adapter to the RS232 Serial connector on the back of the Lync Controller. Turn on the Lync Controller. Run the previously installed Lync Software.